



ZEPHYR

PRODUCT GUIDE 2025

Why Choose Zephyr?

Leader in Technology and Innovation

ZEPHYR CONNECT APP:



Control compatible range hoods remotely from anywhere, changing fan speed, lighting and more. Seamlessly connect with smart devices such as Amazon Alexa or Google Home smart speakers for voice activation. Get notified with detailed product information, reminders for cleaning or filter purchase/replacement, or simply turn a hood off after use. The app provides quick access to warranty information as well as a library of how-to videos.

LUMILIGHT LED LIGHT BULBS:



25,000-hour life, dimmable LED, natural 3,000k color output, 3-year warranty. Integrated throughout most of Zephyr hoods.

TRUHUE™ TECHNOLOGY:



Change the colour temperature or kelvin rating of your hood lights to complement your kitchen lighting, from 2700k to 5000k (currently available in the Siena range hoods).

POWERWAVE™ BLOWER TECHNOLOGY:



Designed to deliver best-in-class performance with unparalleled quiet operation, inspired by three-phase AC power. This system allows for the installation of dual internal blowers to achieve 1,300 CFM.

ICON TOUCH® CONTROLS:



Easy-to-clean, 5-speed touch controls that seamlessly integrate into the stainless steel.

AIRFLOW CONTROL TECHNOLOGY™ (ACT™):



ACT™ is a proprietary feature that limits blower CFM to ensure your home is safe and in compliance with local make-up air codes. ACT™ is available in over 90% of Zephyr hoods.

ADA COMPLIANT – RF WIRELESS REMOTE CONTROL



Select Zephyr range hoods come standard with a wireless remote control, which meets the American Disabilities Act requirements for ADA compliance. An optional wireless remote-control accessory is also available on many Zephyr models.

OTHER GREAT FEATURES ZEPHYR IS KNOWN FOR:

CLEANAIR FUNCTION

Select Zephyr range hoods feature our CleanAir Function that will turn the hood on once every four hours for 10 minutes to ensure the air is properly recirculated. Any Zephyr range hoods featuring PowerWave™ technology also come with the CleanAir Function, including the Roma Pro Wall, Tidal Undercabinet, and Titan Island.

DELAY-OFF FUNCTION

Many Zephyr range hoods include an automatic delay-off feature, which allows you to set your hood to continue venting for 5 or 10 minutes after cooking is complete and then automatically powers your hood off.

Quietest Hoods in the Industry

Zephyr ventilation products can get as low as 0.5 sones, which is the same level of sound as a soft whisper. Or as low as 1 sone, the same as a refrigerator hum.

Highest Quality with Superior Craftsmanship

Zephyr uses high quality stainless steel that is welded and polished so there are no sharp edges or seams. Zephyr delivers exceptional quality, fit and finish you can see, feel, and appreciate.



Flexibility in Installation Options

More than 60% of models can accommodate top and rear ducting; Recirculation option is available on more than 90% of models; Most chimney hoods accommodate 8' to 10' ceiling heights out of the box with duct cover extension kit options for ceilings up to 12' heights.



Quick-Lock Installation System for Island Models

Install an island range hood in 3 easy steps – what used to take 3+ people, now only takes 2! It's the easiest island range hood installation system in the industry.

Versatile Outdoor Options

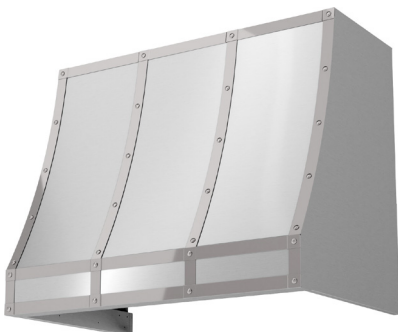
From inserts to wall models, Zephyr outdoor ventilation hoods all share the same great features: 304-stainless steel; pro baffle filters; powerful blowers up to 1,200 CFM; large depth; LED lights and a range of widths to cover even the largest of grills.



Zephyr Warranty

Zephyr backs their products with a generous multi-year warranty. 3-year parts and 1-year labor warranty on most models - up to 10-year warranty on select models.

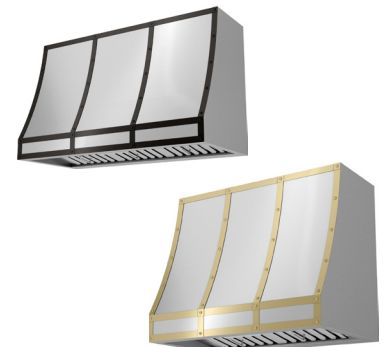
NEW! FORTE WALL CUSTOM HOOD (CHFT36/48ASX)



Customization just got better! This 30" tall stainless steel canopy body includes Stainless Steel banding, with the option to upgrade to Satin Gold or Matte Black banding. Optional duct covers also available in 12" and 18" tall, with option to match the canopy's banding.

Hood inserts are sold separately.

Please turn to page 20 for more details.



COLLECTIONS

CORE
 PRO
 DESIGNER
 BRISAS BY ZEPHYR

MODEL + INSTALL TYPE PAGE
VENTILATION
UNDER-CABINET

| | | |
|------------------|----------------|---|
| Breeze I (AK11) | | 5 |
| Breeze II (AK12) | BLACK SS | 5 |
| Cyclone (AK65) | BLACK SS | 6 |
| Gust (AK71) | | 8 |
| Hurricane (AK25) | | 6 |
| Pisa (ZPI) | | 7 |
| Pyramid (ZPY) | | 7 |
| Tempest I (AK70) | | 8 |
| Tidal I (AK73) | ZEPHYR CONNECT | 9 |
| Typhoon (AK21) | | 6 |
| Valina (ZVA) | | 7 |

WALL

| | | |
|-------------------|----------------|----|
| Anzio (ZAN) | BLACK SS | 12 |
| Apex (DAP) | | 17 |
| Cypress (AK78) | OUTDOOR | 31 |
| Forte | | 20 |
| Horizon (DHZ) | | 19 |
| Layers (DLA) | | 18 |
| Lucé (ZLU) | | 15 |
| Mesa (DME) | | 18 |
| Milano (ZMI) | ZEPHYR CONNECT | 16 |
| Modena (ZMO) | | 15 |
| Okeanito (COK) | | 19 |
| Ombra (ZOM) | BLACK SS | 11 |
| Podestà (ZPO) | | 14 |
| Ravenna (ZRV) | BLACK SS | 12 |
| Roma (ZRO) | | 12 |
| Roma Pro (ZRP) | POWERWAVE™ | 14 |
| Savona (ZSA) | BLACK SS | 11 |
| Siena (ZSI) | | 13 |
| Siena ES (ZSI) | ENERGY STAR | 13 |
| Siena Pro (ZSP) | | 13 |
| Tempest II (AK75) | | 10 |
| Tidal II (AK74) | ZEPHYR CONNECT | 9 |
| Titan (AK76) | POWERWAVE™ | 14 |
| Venezia (ZVE) | ZEPHYR CONNECT | 16 |
| Verona (ZVO) | | 15 |
| Vista (DVS) | | 17 |

ISLAND / IN-CEILING

| | | |
|-------------------|----------------|----|
| Anzio (ZAZ) | | 21 |
| Lucé (ZLC) | | 22 |
| Lux Connect (ALU) | ZEPHYR CONNECT | 25 |
| Milano (ZML) | ZEPHYR CONNECT | 23 |
| Modena (ZMD) | | 22 |

MODEL + INSTALL TYPE PAGE
VENTILATION cont.
ISLAND

| | | |
|-----------------|----------------|----|
| Napoli (ZNA) | ZEPHYR CONNECT | 23 |
| Ravenna (ZRE) | BLACK SS | 21 |
| Roma (ZRM) | | 21 |
| Siena Pro (ZSL) | | 24 |
| Titan (AK77) | POWERWAVE™ | 24 |
| Trapeze (CTP) | | 24 |
| Verona (ZVN) | | 23 |
| Vista (DVL) | | 23 |

DOWNDRAFT

| | | |
|----------------|--|----|
| Lift (DLI) | | 26 |
| Sorrento (DD1) | | 26 |
| Treviso | | 25 |

INSERT

| | | |
|------------------------|----------------|----|
| Monsoon (AK94) | ZEPHYR CONNECT | 30 |
| Monsoon I (AK92) | | 30 |
| Monsoon II (AK93) | | 30 |
| Monsoon Mini (AK91) | | 29 |
| Monsoon Mini II (AK95) | | 29 |
| Spruce (AK98) | OUTDOOR | 31 |
| Tornado Glo (AK85) | | 28 |
| Tornado I (AK81) | | 27 |
| Tornado II (AK82) | | 28 |
| Tornado III (AK83) | | 28 |
| Tornado Mini (AK84) | | 27 |
| Tornado Mini ES (AK84) | ENERGY STAR | 27 |
| Twister (AK80) | | 27 |
| Vortex (AK90) | | 29 |

MICROWAVE DRAWER 31
BRISAS BY ZEPHYR - VENTILATION 32
BRISAS BY ZEPHYR - REFRIGERATION

| | |
|------------------|----|
| Beverage Coolers | 33 |
| Wine Coolers | 34 |

MISCELLANEOUS

| | |
|-------------------------------|----|
| Accessories | 35 |
| ZEPHYR WARRANTY | 36 |
| BRISAS REFRIGERATION WARRANTY | 37 |

UNDER-CABINET

CORE COLLECTION



BREEZE I

MODEL FINISH SIZE W x D

BREEZE I 250 CFM Range Hood w/ Slide Controls, Recirculating Option, and LED Lighting

| | | |
|----------|---|----------------|
| AK1124BW | W | 24" x 20 3/32" |
| AK1124BS | S | 24" x 20 3/32" |
| AK1100BB | B | 30" x 20 3/32" |
| AK1100BW | W | 30" x 20 3/32" |
| AK1100BS | S | 30" x 20 3/32" |
| AK1136BB | B | 36" x 20 3/32" |
| AK1136BW | W | 36" x 20 3/32" |
| AK1136BS | S | 36" x 20 3/32" |

- Max. Blower CFM: 250
- 5 1/2" body height
- 3-speed mechanical slide controls
- 3 1/4"x10" vertical ducting
- 3 1/4"x10" horizontal ducting
- Extra-wide aluminum mesh filters
- 6W LumiLight LED lights
- Dual-level lighting

Accessories

| | |
|-------------|---|
| OAK11-21001 | Recirculating Kit (w/ charcoal filter) |
| OAK11-20001 | Charcoal Filter Replacement (2 per kit) |

CORE COLLECTION



BREEZE II

BREEZE II 400 CFM Range Hood w/ Electronic Controls and LED Lighting

| | | |
|-----------|--------|-----------|
| AK1200CB | B | 30" x 20" |
| AK1200CW | W | 30" x 20" |
| AK1200CS | S | 30" x 20" |
| AK1200CBS | Blk SS | 30" x 20" |
| AK1236CB | B | 36" x 20" |
| AK1236CW | W | 36" x 20" |
| AK1236CS | S | 36" x 20" |
| AK1236CBS | Blk SS | 36" x 20" |

- Max. Blower CFM: 400
- 5 1/2" body height
- Auto delay-off
- 7" or 3 1/4"x10" vertical ducting
- 3 1/4"x10" horizontal ducting
- 3-speed electronic controls
- 6W LumiLight LED lights
- Dual-level lighting
- Extra-wide aluminum mesh filters

Accessories

| | |
|-------------|---|
| ZRC-0012 | Recirculating Kit (w/ charcoal filter) |
| OAK11-20001 | Charcoal Filter Replacement (2 per kit) |
| MUA006A | Make-Up Air Kit |

Finish: (B)-Black (W)-White (S)-Stainless Steel (Blk SS)-Black Stainless Steel
Warranty: 3 years non-consumable parts, 1 year labor

UNDER-CABINET



CORE COLLECTION

CYCLONE

MODEL FINISH SIZE W x D

CYCLONE 600 CFM Self-Cleaning Hood w/ Slide Controls and LED Lighting

| | | |
|-----------|--------|---------------|
| AK6500CB | B | 30" x 22 1/4" |
| AK6500CW | W | 30" x 22 1/4" |
| AK6500CS | S | 30" x 22 1/4" |
| AK6500CBS | Blk SS | 30" x 22 1/4" |
| AK6536CB | B | 36" x 22 1/4" |
| AK6536CW | W | 36" x 22 1/4" |
| AK6536CS | S | 36" x 22 1/4" |
| AK6536CBS | Blk SS | 36" x 22 1/4" |
| AK6542CS | S | 42" x 22 1/4" |

- Max. Blower CFM: 600
- 6 3/8" body height
- 3-speed mechanical slide controls
- 6" or 3 1/4"x10" vertical ducting
- 3 1/4"x10" horizontal ducting
- Self cleaning
- 6W LumiLight LED lights
- Dual-level lighting

Accessories

| | |
|---------|-----------------|
| MUA006A | Make-Up Air Kit |
|---------|-----------------|



CORE COLLECTION

HURRICANE
ACT

HURRICANE 695 CFM Self-Cleaning Hood w/ Airflow Control Technology (ACT™) and LED Lighting

| | | |
|----------|---|---------------|
| AK2500CS | S | 30" x 22 1/8" |
| AK2536CS | S | 36" x 22 1/8" |

- Max. Blower CFM: 695
- ACT Max. Blower CFM: 390, 290
- 7" body height
- Self cleaning
- 7" or 3 1/4"x10" vertical ducting
- 3 1/4"x10" horizontal ducting
- 3-speed electronic touch controls
- 6W LumiLight LED lights
- Dual-level lighting
- Auto delay-off

Accessories

| | |
|---------|-----------------|
| MUA008A | Make-Up Air Kit |
|---------|-----------------|



CORE COLLECTION

TYPHOON
ACT

TYPHOON 850 CFM Self-Cleaning Hood with LED Lighting and ACT™

| | | |
|----------|---|---------------|
| AK2100CB | B | 30" x 20 3/4" |
| AK2100CW | W | 30" x 20 3/4" |
| AK2100CS | S | 30" x 20 3/4" |
| AK2136CB | B | 36" x 20 3/4" |
| AK2136CW | W | 36" x 20 3/4" |
| AK2136CS | S | 36" x 20 3/4" |
| AK2142CS | S | 42" x 20 3/4" |
| AK2148CS | S | 48" x 20 3/4" |

- Max. Blower CFM: 850
- ACT Max. Blower CFM: 390, 290
- 7 7/8" body height
- Self cleaning
- 7" or 3 1/4"x10" vertical ducting
- 3 1/4"x10" horizontal ducting
- 6-speed capacitive touch controls
- 6W LumiLight LED lights
- Tri-level lighting
- Auto delay-off

Accessories

| | |
|---------|-----------------|
| MUA008A | Make-Up Air Kit |
|---------|-----------------|

Finish: (B)-Black (W)-White (S)-Stainless Steel (Blk SS)-Black Stainless Steel
Warranty: 10 years non-consumable parts, 1 year labor

UNDER-CABINET



PYRAMID



PISA



VALINA

| MODEL | FINISH | SIZE W x D |
|--|---|------------|
| PYRAMID 400 CFM Pyramid-Shaped Hood w/ Perimeter Aspiration System and LED Lighting | | |
| ZPY-E30BS | S | 30" x 21" |
| ZPY-E36BS | S | 36" x 21" |
| PYRAMID 290 CFM Pyramid-Shaped Hood w/ Perimeter Aspiration System and LED Lighting | | |
| ZPY-E30BS290 | S | 30" x 21" |
| <ul style="list-style-type: none"> • Max. Blower CFM: 400 or 290 • 7 3/8" body height • 3-speed mechanical slide controls • Perimeter aspiration system • 7" or 3 1/4"x10" vertical ducting • 3 1/4"x10" horizontal ducting • 6W LumiLight LED lights • Dual-level lighting • Aluminum mesh filters | | |
| Accessoires | | |
| ZRC-00PY | Recirculating Kit (w/ charcoal filters) | |
| ZOF-C009 | Charcoal Filter Replacement | |
| MUA006A | Make-Up Air Kit | |

| | | |
|---|---|---------------|
| PISA 500 CFM Designer Hood w/ Sliding Glass and LED Lighting | | |
| ZPI-E24BG | S* w/ Glass | 24" x 18 3/4" |
| ZPI-E24BW | W* w/ Glass | 24" x 18 3/4" |
| ZPI-E30BG | S* w/ Glass | 30" x 18 3/4" |
| ZPI-E30BW | W* w/ Glass | 30" x 18 3/4" |
| ZPI-E36BG | S* w/ Glass | 36" x 18 3/4" |
| PISA 290 CFM Designer Hood w/ Sliding Glass and LED Lighting | | |
| ZPI-E24BG290 | S* w/ Glass | 24" x 18 3/4" |
| ZPI-E24BW290 | W* w/ Glass | 24" x 18 3/4" |
| ZPI-E30BG290 | S* w/ Glass | 30" x 18 3/4" |
| ZPI-E30BW290 | W* w/ Glass | 30" x 18 3/4" |
| ZPI-E36BG290 | S* w/ Glass | 36" x 18 3/4" |
| <ul style="list-style-type: none"> • Max. Blower CFM: 500 or 290 • 1 1/2" body height** • Sliding glass canopy • 6" round vertical ducting • 6" round horizontal ducting • 3-speed mechanical slide controls • 6W LumiLight LED lights • Dual-level lighting • Aluminum mesh filters | | |
| Accessoires | | |
| ZRC-00PI | Recirculating Kit (w/ charcoal filters) | |
| ZOF-C0PI | Charcoal Filter Replacement | |
| MUA006A | Make-Up Air Kit | |

* Refers to front trim color. Body is painted gray.
** A 9 9/16" blower housing is installed in the upper cabinet.

| | | |
|--|---|-------------------|
| VALINA 290 CFM Slide Out Canopy Hood | | |
| ZVA-E30AS290 | S* | 30" x 17 7/8" |
| ZVA-M90AS290 | S* | 35-3/8" x 17 7/8" |
| <ul style="list-style-type: none"> • Max. Blower CFM: 290 • 1 1/2" body height** • 6" round vertical ducting • 2-speed mechanical push button controls • 5W LED lights • Aluminum mesh filters | | |
| Accessoires | | |
| ZRC-00VA | Recirculating Kit (w/ charcoal filters) | |
| ZOF-C011 | Charcoal Filter Replacement (2 per kit) | |

* Refers to front trim color. Body is painted gray.
** A 9" blower housing is installed in the upper cabinet.

Finish: (W)-White (S)-Stainless Steel
Warranty: 3 years non-consumable parts, 1 year labor

UNDER-CABINET

CORE COLLECTION



GUST

MODEL FINISH SIZE W x D

GUST 400 CFM 7-3/8in Tall Euro-Pro Hood w/ Baffle Filters and LED Lighting

| | | |
|-------------|---|-----------|
| AK7100BS-BF | S | 30" x 21" |
| AK7136BS-BF | S | 36" x 21" |

GUST 290 CFM 7-3/8in Tall Euro-Pro Hood w/ Baffle Filters and LED Lighting

| | | |
|----------------|---|-----------|
| AK7100BS290-BF | S | 30" x 21" |
| AK7136BS290-BF | S | 36" x 21" |

- Max. Blower CFM: 400 or 290
- 7 3/8" body height
- 3-speed mechanical slide controls
- 7" or 3 1/4"x10" vertical ducting
- 3 1/4"x10" horizontal ducting
- Baffle filters
- 6W LumiLight LED lights
- Dual-level lighting

Accessories

| | |
|----------|---|
| ZRC-0071 | Recirculating Kit (w/ charcoal filters) |
| ZOF-C005 | Charcoal Filter Replacement |
| MUA006A | Make-Up Air Kit |

PRO COLLECTION



TEMPEST I
ACT™

TEMPEST I 650 CFM 11in Tall Pro-Style Hood w/ LED Lighting and ACT™

| | | |
|----------|---|---------------|
| AK7000CS | S | 30" x 22 1/2" |
| AK7036CS | S | 36" x 22 1/2" |
| AK7042CS | S | 42" x 22 1/2" |
| AK7048CS | S | 48" x 22 1/2" |

- Max. Blower CFM: 650 (included)
- Max. Blower CFM: 1,200 (optional)
- ACT Max. Blower CFM: 390, 290
- 11" body height
- Auto delay-off
- 8" or 10" round vertical ducting
- 8" or 3 1/4"x10" horizontal ducting
- 6-speed electronic touch controls
- CleanAir function
- 6W LumiLight LED lights
- Dual-level lighting
- Pro baffle filters
- Wireless remote option

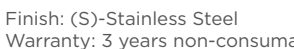
Accessories and Blowers

| | |
|-------------|---|
| AK0720 | 12" Duct Cover (For AK7000CS) |
| AK0726 | 12" Duct Cover (For AK7036CS) |
| AK0722 | 12" Duct Cover (For AK7042CS) |
| AK0728 | 12" Duct Cover (For AK7048CS) |
| AK1720 | 24" Duct Cover (For AK7000CS) |
| AK1726 | 24" Duct Cover (For AK7036CS) |
| AK1722 | 24" Duct Cover (For AK7042CS) |
| AK1728 | 24" Duct Cover (For AK7048CS) |
| ZRC-7000C* | Recirculating Kit (For AK7000CS, w/ charcoal filters) |
| ZRC-7036C* | Recirculating Kit (For AK7036CS, w/ charcoal filters) |
| ZRC-7042C* | Recirculating Kit (For AK7042CS, w/ charcoal filters) |
| ZRC-7048C* | Recirculating Kit (For AK7048CS, w/ charcoal filters) |
| ZOF-C002 | Charcoal Filter Replacement |
| PBD-1200A** | 1,200 CFM Internal Blower Kit (10" round duct) |
| 14000005 | RF Wireless Remote Control |
| MUA008A | Make-Up Air Kit (650 CFM) |
| MUA010A | Make-Up Air Kit (1,200 CFM) |

*ZRC-70xxC recirculating kits are compatible with 650-CFM internal blower only (blower included with hood). ZRC-70xxC includes a 4-inch tall return-air box, so please plan your installation accordingly.

PBD-1200A is a dual internal blower kit with a single blower and two blower openings. To complete the kit you must remove the blower from the hood and install it into the PBD-1200A kit. **NOTE: PBD-1200A blower is only compatible with models AK7036CS, AK7042CS and AK7048CS.

Finish: (S)-Stainless Steel
Warranty: 3 years non-consumable parts, 1 year labor



shown with recirculating kit

UNDER-CABINET
/ WALL

PRO COLLECTION



TIDAL I

ACT 



shown with recirculating kit

PRO COLLECTION



TIDAL II

ACT 

MODEL FINISH SIZE W x D

TIDAL I 700 CFM 11in Tall Pro-Style Hood w/ Zephyr Connect + PowerWave™ Blower

| | | |
|----------|---|---------------|
| AK7300AS | S | 30" x 22 1/2" |
| AK7336AS | S | 36" x 22 1/2" |

- Max. Blower CFM: 700 (included)
- Max. Blower CFM: 1,300 (optional)
- ACT Max. Blower CFM: 590, 390, 290
- 11" body height
- Zephyr Connect app compatible
- 8" or 10" round vertical ducting
- 8" or 3 1/4"x10" horizontal ducting
- 6-speed proximity controls
- CleanAir function
- 6W LumiLight LED lights
- Tri-level lighting
- Pro baffle filters
- Auto delay-off

Accessories and Blowers

| | |
|-------------|---|
| PBD-1300B* | 1,300 CFM Internal Blower Kit (10" round duct) |
| AK0720 | 12" Duct Cover (For AK7300AS) |
| AK0726 | 12" Duct Cover (For AK7336AS) |
| AK1720 | 24" Duct Cover (For AK7300AS) |
| AK1726 | 24" Duct Cover (For AK7336AS) |
| ZRC-7000C** | Recirculating Kit (For AK7300AS, w/ charcoal filters) |
| ZRC-7036C** | Recirculating Kit (For AK7336AS, w/ charcoal filters) |
| ZOF-C002 | Charcoal Filter Replacement |
| 14000005 | RF Wireless Remote Control |
| MUA008A | Make-Up Air Kit (700 CFM) |
| MUA010A | Make-Up Air Kit (1,300 CFM) |

TIDAL II 700 CFM 18in Tall Pro-Style Hood w/ Zephyr Connect + PowerWave™ Blower

| | | |
|----------|---|-----------|
| AK7400AS | S | 30" x 24" |
| AK7436AS | S | 36" x 24" |
| AK7448AS | S | 48" x 24" |

- Max. Blower CFM: 700 (included)
- Max. Blower CFM: 1,300 (optional)
- ACT Max. Blower CFM: 590, 390, 290
- Zephyr Connect app compatible
- 8" or 10" round vertical ducting
- 8", 10" or 3 1/4"x10" horizontal ducting
- 6-speed proximity controls
- CleanAir function
- 6W LumiLight LED lights
- Tri-level lighting
- Pro baffle filters
- Auto delay-off

Accessories and Blowers

| | |
|-------------|---|
| PBD-1300B* | 1,300 CFM Internal Blower Kit (10" round duct) |
| AK0720 | 12" Duct Cover (For AK7400AS) |
| AK0726 | 12" Duct Cover (For AK7436AS) |
| AK0728 | 12" Duct Cover (For AK7448AS) |
| AK1720 | 24" Duct Cover (For AK7400AS) |
| AK1726 | 24" Duct Cover (For AK7436AS) |
| AK1728 | 24" Duct Cover (For AK7448AS) |
| ZRC-7000C** | Recirculating Kit (For AK7400AS, w/ charcoal filters) |
| ZRC-7036C** | Recirculating Kit (For AK7436AS, w/ charcoal filters) |
| ZRC-7048C** | Recirculating Kit (For AK7448AS, w/ charcoal filters) |
| ZOF-C002 | Charcoal Filter Replacement |
| 14000005 | RF Wireless Remote Control |
| MUA008A | Make-Up Air Kit (700 CFM) |
| MUA010A | Make-Up Air Kit (1,300 CFM) |

*PBD-1300B is a dual internal blower kit with a single blower and two blower openings. To complete the kit you must remove the blower from the hood and install it into the PBD-1300B kit.
NOTE: PBD-1300B blower is not compatible with the AK7300AS model.

**ZRC-70xxC recirculating kits are compatible with 700-CFM internal blower only (blower included with hood). ZRC-70xxC includes a 4-inch tall return-air box, so please plan your installation accordingly.



DID YOU KNOW Zephyr Connect is an exclusive app that allows you to control the range hood remotely from anywhere with an easy-to-use interface and enhanced product features. Change the fan speed, set the delay-off, turn lights on/off, and more. Connect to your smart devices such as Amazon Alexa or Google Home smart speakers for voice activation and hands free operation. Available on the App Store or Google Play.

Finish: (S)-Stainless Steel
Warranty: 3 years non-consumable parts, 1 year labor

WALL



PRO COLLECTION

TEMPEST II
ACT™

MODEL FINISH SIZE W x D

TEMPEST II 650 CFM 18in Tall Pro-Style Hood w/ LED Lighting and ACT™

| | | |
|----------|---|-----------|
| AK7500CS | S | 30" x 24" |
| AK7536CS | S | 36" x 24" |
| AK7542CS | S | 42" x 24" |
| AK7548CS | S | 48" x 24" |
| AK7554CS | S | 54" x 24" |

- Max. Blower CFM: 650 (included)
- Max. Blower CFM: 1,200 (optional)
- ACT Max. Blower CFM: 390, 290
- Wireless remote option
- 8" or 10" round vertical ducting
- 8", 10" or 3 1/4"x10" horizontal ducting
- 6-speed electronic touch controls
- CleanAir function
- 6W LumiLight LED lights
- Dual-level lighting
- Pro baffle filters
- Auto delay-off

Accessories and Blowers

| | |
|-------------|---|
| AK0720 | 12" Duct Cover (For AK7500CS) |
| AK0726 | 12" Duct Cover (For AK7536CS) |
| AK0722 | 12" Duct Cover (For AK7542CS) |
| AK0728 | 12" Duct Cover (For AK7548CS) |
| AK0724 | 12" Duct Cover (For AK7554CS) |
| AK1720 | 24" Duct Cover (For AK7500CS) |
| AK1726 | 24" Duct Cover (For AK7536CS) |
| AK1722 | 24" Duct Cover (For AK7542CS) |
| AK1728 | 24" Duct Cover (For AK7548CS) |
| AK1724 | 24" Duct Cover (For AK7554CS) |
| ZRC-7000C* | Recirculating Kit (For AK7500CS, w/ charcoal filters) |
| ZRC-7036C* | Recirculating Kit (For AK7536CS, w/ charcoal filters) |
| ZRC-7042C* | Recirculating Kit (For AK7542CS, w/ charcoal filters) |
| ZRC-7048C* | Recirculating Kit (For AK7548CS, w/ charcoal filters) |
| ZOF-C002 | Charcoal Filter Replacement |
| PBD-1200A** | 1,200 CFM Internal Blower Kit (10" round duct) |
| 14000005 | RF Wireless Remote Control |
| MUA008A | Make-Up Air Kit (650 CFM) |
| MUA010A | Make-Up Air Kit (1,200 CFM) |

*ZRC-70xxC recirculating kits are compatible with 650-CFM internal blower only (blower included with hood). ZRC-70xxC includes a 4-inch tall return-air box, so please plan your installation accordingly.

**PBD-1200A is a dual internal blower kit with a single blower and two blower openings. To complete the kit you must remove the blower from the hood and install it into the PBD-1200A kit.

Finish: (S)-Stainless Steel
Warranty: 3 years non-consumable parts, 1 year labor

WALL



OMBRA
ACT™



SAVONA
ACT™

MODEL FINISH SIZE W x D

OMBRA 600 CFM Traditional Wall Hood w/ Airflow Control Technology (ACT™) and LED Lighting

| | | |
|------------|--------|---------------|
| ZOM-E30BS | S | 30" x 19 3/4" |
| ZOM-E30BBS | Blk SS | 30" x 19 3/4" |
| ZOM-E36BS | S | 36" x 19 3/4" |
| ZOM-E36BBS | Blk SS | 36" x 19 3/4" |

- Max. Blower CFM: 600
- ACT Max. Blower CFM: 390, 290
- Auto delay-off
- 4-speed capacitive touch controls
- 6" round vertical ducting
- Accommodates 9'4" ceiling height
- 6W LumiLight LED lights
- Dual-level lighting
- Aluminum mesh filters

Accessories

| | |
|------------|--|
| ZRC-010M | Recirculating Kit (w/ charcoal filters) |
| ZOF-C091 | Charcoal Filter Replacement |
| Z1C-010MS | Stainless Steel Duct Cover Extension (For up to a 12' ceiling) |
| Z1C-010MBS | Black SS Duct Cover Extension (For up to a 12' ceiling) |
| MUA006A | Make-Up Air Kit |
| ZOF-B002 | Hybrid Baffle Filter Kit (2 filters) |

SAVONA 600 CFM Classic Curved Body Wall Hood w/ ACT™ & LED lights

| | | |
|------------|--------|--------------------|
| ZSA-E30FB | B | 30" x 19 1/2" |
| ZSA-E30FW | W | 30" x 19 1/2" |
| ZSA-E30FS | S | 30" x 19 1/2" |
| ZSA-E30FBS | Blk SS | 30" x 19 1/2" |
| ZSA-M90FB | B | 35 7/16" x 19 1/2" |
| ZSA-M90FW | W | 35 7/16" x 19 1/2" |
| ZSA-M90FS | S | 35 7/16" x 19 1/2" |
| ZSA-M90FBS | Blk SS | 35 7/16" x 19 1/2" |

- Max. Blower CFM: 600
- ACT Max. Blower CFM: 390, 290
- Auto delay-off
- 5-speed ICON Touch™ controls
- 6" round vertical ducting
- Accommodates 9'7" ceiling height
- 6W LumiLight LED lights
- Dual-level lighting
- Aluminum mesh filters

Accessories

| | |
|------------|--|
| ZRC-00SV | Recirculating Kit (w/ charcoal filters) |
| ZOF-C002 | Charcoal Filter Replacement |
| Z1C-01SAB | Duct Cover Extension, B (For up to a 12' ceiling) |
| Z1C-01SAW | Duct Cover Extension, W (For up to a 12' ceiling) |
| Z1C-01SA | Duct Cover Extension, S (For up to a 12' ceiling) |
| Z1C-01SABS | Duct Cover Extension, Blk SS (For up to a 12' ceiling) |
| MUA006A | Make-Up Air Kit |
| ZOF-B001 | Baffle Filter Kit (2 filters) |
| RC-0002 | Wireless RF Remote Control Kit |

DID YOU KNOW Zephyr has a comprehensive hood height calculator online to determine if our chimney range hoods will fit in your kitchen. zephyronline.com/customer-care/range-hood-height-calculator

Finish: (S)-Stainless Steel (Blk SS)-Black Stainless Steel (B)-Black (W)-White
Warranty: 3 years non-consumable parts, 1 year labor

WALL

CORE COLLECTION



ANZIO
ACT™

MODEL FINISH SIZE W x D

ANZIO 600 CFM Low-Profile Modern Wall Hood w/ ACT™ & LED lights

| | | |
|------------|--------|----------------|
| ZAN-E24DS | S | 24" x 22" |
| ZAN-E30DS | S | 30" x 22" |
| ZAN-E30DBS | Blk SS | 30" x 22" |
| ZAN-M90DS | S | 35 7/16" x 22" |
| ZAN-M90DBS | Blk SS | 35 7/16" x 22" |

- Max. Blower CFM: 600
- ACT Max. Blower CFM: 390, 290
- Auto delay-off
- 5-speed ICON Touch® controls
- 6" round vertical ducting
- Accommodates 9'10" ceiling height
- 6W LumiLight LED lights
- Dual-level lighting
- Aluminum mesh filters

Accessories

| | |
|------------|--|
| ZRC-01AN | Recirculating Kit (w/ charcoal filters) |
| ZOF-C091 | Charcoal Filter Replacement |
| ZIC-00AN | Duct Cover Extension (For up to a 12' ceiling) |
| ZIC-00ANBS | Duct Cover Extension, Blk SS (For up to a 12' ceiling) |
| MUA006A | Make-Up Air Kit |
| ZOF-B002 | Hybrid Baffle Filter Kit (2 filters) |
| RC-0002 | Wireless RF Remote Control Kit |

CORE COLLECTION



RAVENNA
ACT™

RAVENNA 600 CFM Curved Glass Wall Hood w/ ACT™ & LED lights

| | | |
|--------------|----------------------------|--------------------|
| ZRV-E30CGC | S w/ Clear Glass | 30" x 19 3/4" |
| ZRV-E30CBSGG | Blk SS w/ Smoke Gray Glass | 30" x 19 3/4" |
| ZRV-M90CGC | S w/ Clear Glass | 35-3/16" x 19 3/4" |
| ZRV-M90CBSGG | Blk SS w/ Smoke Gray Glass | 35 3/16" x 19 3/4" |

- Max. Blower CFM: 600
- ACT Max. Blower CFM: 390, 290
- Auto delay-off
- 5-speed ICON Touch® controls
- 6" round vertical ducting
- Accommodates 9'4" ceiling height
- 6W LumiLight LED lights
- Dual-level lighting
- Aluminum mesh filters

Accessories

| | |
|------------|--|
| ZRC-00RV | Recirculating Kit (w/ charcoal filters) |
| ZOF-C002 | Charcoal Filter Replacement |
| ZIC-00RV | Duct Cover Extension (For up to a 12' ceiling) |
| ZIC-00RVBS | Duct Cover Extension, Blk SS (For up to a 12' ceiling) |
| MUA006A | Make-Up Air Kit |
| RC-0002 | Wireless RF Remote Control Kit |

CORE COLLECTION



ROMA
ACT™

ROMA 600 CFM Contemporary Hood w/ ACT™ & LED lights

| | | |
|-----------|---|----------------|
| ZRO-E30FS | S | 30" x 22" |
| ZRO-M90FS | S | 35 7/16" x 22" |

- Max. Blower CFM: 600
- ACT Max. Blower CFM: 390, 290
- Auto delay-off
- 5-speed ICON Touch® controls
- 6" round vertical ducting
- Accommodates 9'9" ceiling height
- 6W LumiLight LED lights
- Dual-level lighting
- Aluminum mesh filters

Accessories

| | |
|----------|--|
| ZRC-01RO | Recirculating Kit (2 charcoal filters) |
| ZOF-C002 | Charcoal Filter Replacement |
| ZIC-00RO | Duct Cover Extension (For up to a 12' ceiling) |
| MUA006A | Make-Up Air Kit |
| RC-0002 | Wireless RF Remote Control Kit |

Finish: (S)-Stainless Steel (Blk SS)-Black Stainless Steel
Warranty: 3 years non-consumable parts, 1 year labor

WALL

CORE COLLECTION



SIENA
ACT™

MODEL FINISH SIZE W x D

SIENA 650 CFM Traditional Wall Hood w/ Hybrid Baffle Filters, ACT™ & LED Lights

| | | |
|-----------|---|-----------|
| ZSI-E30DS | S | 30" x 22" |
| ZSI-E36DS | S | 36" x 22" |

- Max. Blower CFM: 650
- ACT Max. Blower CFM: 390, 290
- Hybrid baffle filters
- Accommodates 9'4" ceiling height
- 5-speed ICON Touch® LCD controls
- 8" round vertical ducting
- 8" or 3 1/4"x10" horizontal ducting
- Single-piece and seamless body
- 6W LumiLight LED lights
- TruHue™ dimmable, color-tunable, dual-level lighting
- Auto delay-off

Accessories

| | |
|----------|--|
| ZRC-00SI | Recirculating Kit (w/ charcoal filters) |
| Z1C-00SI | Duct Cover Extension (For up to a 12' ceiling) |
| ZOF-C09I | Charcoal Filter Replacement |
| MUA008A | Make-Up Air Kit |
| RC-0002 | Wireless RF Remote Control Kit |

CORE COLLECTION



SIENA ES
ACT™ ENERGY STAR

SIENA ES 400 CFM ENERGY STAR Traditional Wall Hood w/ Hybrid Baffle Filters & ACT™

| | | |
|--------------|---|-----------|
| ZSI-E30BS-ES | S | 30" x 22" |
| ZSI-E36BS-ES | S | 36" x 22" |

- Max. Blower CFM: 400
- ACT Max. Blower CFM: 290
- ENERGY STAR® certified
- 5-speed ICON Touch® controls
- 8" round vertical or horizontal ducting
- Accommodates 9'4" ceiling height
- 7W LumiLight LED lights
- Hybrid baffle filters
- Auto delay-off

Accessories

| | |
|----------|---|
| Z1C-00SI | Duct Cover Extension, (For up to a 12' ceiling) |
|----------|---|

CORE COLLECTION



SIENA PRO WALL
ACT™

SIENA PRO 1,200 CFM Pro Wall Hood w/ Hybrid Baffle Filters, ACT™ & LED Lights

| | | |
|-----------|---|-----------|
| ZSP-E36DS | S | 36" x 24" |
| ZSP-E42DS | S | 42" x 24" |
| ZSP-E48DS | S | 48" x 24" |

- Max. Blower CFM: 1,200
- ACT Max. Blower CFM: 590, 390
- Auto delay-off
- 5-speed ICON Touch® LCD controls
- 10" round vertical ducting
- Accommodates 9'4" ceiling height
- 6W LumiLight LED lights
- TruHue™ dimmable, color-tunable, dual-level lighting
- Hybrid baffle filters
- Single-piece and seamless body

Accessories

| | |
|----------|--|
| Z1C-00SP | Duct Cover Extension (For up to a 12' ceiling) |
| MUA010A | Make-Up Air Kit |
| RC-0002 | Wireless RF Remote Control Kit |

Finish: (S)-Stainless Steel
Warranty: 3 years non-consumable parts, 1 year labor

WALL



PODESTÀ WALL
ACT™

MODEL FINISH SIZE W x D

PODESTÀ 600 CFM Pro-Style Chimney Hood w/ LED Lights

| | | |
|-----------|---|-----------|
| ZPO-E30AS | S | 30" x 24" |
| ZPO-E36AS | S | 36" x 24" |

- Max. Blower CFM: 600
- ACT Max. Blower CFM: 390, 290
- 3-speed electronic touch controls
- 6" round vertical ducting
- Dual-level lighting
- Accommodates 9'5" ceiling height
- 5W LED lights
- Hybrid baffle filters
- Auto delay-off

Accessories

| | |
|----------|---|
| Z1C-01PO | Duct Cover Extension (For a 9.5'-12' ceiling) |
| ZRC-00PO | Recirculating Kit (w/ charcoal filters) |
| ZOF-C011 | Charcoal Filter Replacement (2 per kit) |
| RC-0003 | RF Wireless Remote Control |



TITAN
ACT™

TITAN 750 CFM Pro-Style Chimney Hood w/ Powerwave™ Blower, ACT™ & LED Lights

| | | |
|----------|---|-----------|
| AK7636BS | S | 36" x 24" |
| AK7642BS | S | 42" x 24" |
| AK7648BS | S | 48" x 24" |
| AK7654BS | S | 54" x 24" |
| AK7660BS | S | 60" x 24" |

- Max. Blower CFM: 750 (included)
- Max. Blower CFM: 1,300 (optional)
- ACT Max. Blower CFM: 590, 390, 290
- Auto delay-off
- CleanAir function
- 8" or 10" round vertical & horizontal ducting
- Dual-level lighting
- Accommodates 9'6" ceiling height
- Directional lighting
- 6W LumiLight LED lights
- Pro baffle filters
- 6-speed LCD controls
- Wireless remote option

Accessories

| | |
|-----------|--|
| PBD-1300B | 1,300 CFM Internal Blower Kit (10" round duct) |
| Z1C-0076 | Duct Cover Extension - 36", 42" (For a 10'-12' ceiling) |
| Z1C-0176 | Duct Cover Extension - 48", 54", 60" (For a 10'-12' ceiling) |
| 14000005 | RF Wireless Remote Control |
| MUA008A | Make-Up Air Kit (750 CFM) |
| MUA010A | Make-Up Air Kit (1,300 CFM) |



ROMA PRO
ACT™

ROMA PRO 750 CFM Pro-Style Chimney Hood w/ Powerwave™ Blower, ACT™ & LED Lights

| | | |
|-----------|---|-----------|
| ZRP-E36BS | S | 36" x 24" |
| ZRP-E48BS | S | 48" x 24" |

- Max. Blower CFM: 750 (included)
- Max. Blower CFM: 1,300 (optional)
- ACT Max. Blower CFM: 590, 390, 290
- Auto delay-off
- CleanAir function
- 8" or 10" round vertical ducting
- Dual-level lighting
- Accommodates 10'3" ceiling height
- Directional lighting
- 6W LumiLight LED lights
- Pro baffle filters
- 6-speed LCD controls
- Wireless remote option

Accessories

| | |
|-----------|--|
| PBD-1300B | 1,300 CFM Internal Blower Kit (10" round duct) |
| Z1C-00RP | Duct Cover Extension (For a 10'-12' ceiling) |
| 14000005 | RF Wireless Remote Control |
| MUA008A | Make-Up Air Kit (750 CFM) |
| MUA010A | Make-Up Air Kit (1,300 CFM) |

Finish: (S)-Stainless Steel
Warranty: 3 years non-consumable parts, 1 year labor

WALL

CORE COLLECTION



MODENA
ACT™

MODEL FINISH SIZE W x D

MODENA 600 CFM Thin Floating Glass Wall Hood w/ LED Lighting and ACT™

| | | |
|-----------|------------|--------------------|
| ZMO-E30BS | S w/ Glass | 30" x 22 1/8" |
| ZMO-M90BS | S w/ Glass | 35 7/16" x 22 1/8" |

- Max. Blower CFM: 600
- ACT Max. Blower CFM: 390, 290
- Accommodates 10' ceiling height
- 5-speed ICON Touch® controls
- 8" round vertical ducting
- Auto delay-off
- 6W LumiLight LED lights
- Dual-level lighting
- Aluminum mesh filter

Accessories

| | |
|----------|--|
| ZRC-00MO | Recirculating Kit (w/ charcoal filter) |
| ZOF-C002 | Charcoal Filter Replacement |
| ZIC-00MO | Duct Cover Extension (For up to a 12' ceiling) |
| MUA006A | Make-Up Air Kit |

CORE COLLECTION



LUCÉ
ACT™

LUCÉ 600 CFM Wall Hood w/ LED Accent Lighting, ACT™ & LED Lights

| | | |
|-----------|---|----------------|
| ZLU-E30CS | S | 30" x 22" |
| ZLU-M90CS | S | 35 7/16" x 22" |

- Max. Blower CFM: 600
- ACT Max. Blower CFM: 390, 290
- Auto delay-off
- Aluminum mesh filter
- 5-speed ICON Touch® controls
- 6" round vertical ducting
- Accommodates 10' ceiling height
- 6W LumiLight LED lights
- Dual-level lighting
- 3-color LED accent light

Accessories

| | |
|----------|--|
| ZRC-00LU | Recirculating Kit (w/ charcoal filter) |
| ZOF-C092 | Charcoal Filter Replacement |
| ZIC-00LU | Duct Cover Extension (For up to a 12' ceiling) |
| MUA006A | Make-Up Air Kit |
| RC-0002 | Wireless RF Remote Control Kit |

Lucé illuminates in cloud white, deep blue and amber.

CORE COLLECTION



VERONA
ACT™

VERONA 600 CFM LED Illuminated Glass Wall Hood w/ LED Lighting and ACT™

| | | |
|-----------|------------|----------------|
| ZVO-E30BG | S w/ Glass | 30" x 22" |
| ZVO-M90BG | S w/ Glass | 35 7/16" x 22" |

- Max. Blower CFM: 600
- ACT Max. Blower CFM: 390, 290
- Accommodates 10' ceiling height
- Aluminum mesh filter
- 5-speed ICON Touch® controls
- 8" round vertical ducting
- Auto delay-off
- 6W LumiLight LED lights
- Dual-level lighting
- 3 color LED illuminated glass

Accessories

| | |
|----------|--|
| ZRC-00VO | Recirculating Kit (w/ charcoal filters) |
| ZOF-C002 | Charcoal Filter Replacement |
| ZIC-00VO | Duct Cover Extension (For up to a 12' ceiling) |
| MUA006A | Make-Up Air Kit |

Verona glass illuminates in cloud white, deep blue and amber.

DID YOU KNOW Lucé & Verona models have a "demo mode" that cycles through each of the three LED accent light colors every 10 seconds. To enable demo mode, hold down the "accent light" button on the bottom of the hood for 3 seconds.

Finish: (S)-Stainless Steel
Warranty: 3 years non-consumable parts, 1 year labor

WALL

CORE COLLECTION



VENEZIA
ACT

MODEL FINISH SIZE W x D

VENEZIA 700 CFM Wall Hood w/ Zephyr Connect + PowerWave™ Blower, ACT & LED lights

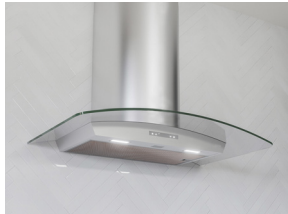
| | | |
|-----------|---|-----------|
| ZVE-E30DS | S | 30" x 24" |
| ZVE-E36DS | S | 36" x 24" |
| ZVE-E42DS | S | 42" x 24" |

- Max. Blower CFM: 700
- ACT Max. Blower CFM: 590, 390, 290
- Hybrid baffle filters
- CleanAir function
- 6-speed proximity controls
- 8" round vertical ducting
- Accommodates 9'6" ceiling height
- Zephyr Connect app compatible
- 6W LumiLight LED lights
- Tri-level lighting
- Auto delay-off

Accessories

| | |
|----------|--|
| ZRC-03VE | Recirculating Kit (w/ charcoal filters) |
| ZOF-C091 | Charcoal Filter Replacement |
| Z1C-01VE | Duct Cover Extension (For up to a 12' ceiling) |
| 14000005 | RF Wireless Remote Control |
| MUA008A | Make-Up Air Kit |

CORE COLLECTION



MILANO WALL
ACT

MILANO 700 CFM Curved Canopy Wall Hood w/ Zephyr Connect, PowerWave™ Blower & ACT™

| | | |
|-----------|------------|--------------------|
| ZMI-M90CG | S w/ Glass | 35 3/16" x 20 1/2" |
| ZMI-M90CS | S | 35 3/16" x 20 1/2" |

- Max. Blower CFM: 700
- ACT Max. Blower CFM: 590, 390, 290
- CleanAir function
- Zephyr Connect app compatible
- 6-speed proximity controls
- 8" round vertical ducting
- Accommodates 10' ceiling height
- Aluminum mesh filter
- 6W LumiLight LED lights
- Tri-level lighting
- Auto delay-off

Accessories

| | |
|----------|--|
| ZRC-00MI | Recirculating Kit (w/ charcoal filters) |
| ZOF-C002 | Charcoal Filter Replacement |
| Z1C-01MI | Duct Cover Extension (For up to a 12' ceiling) |
| 14000005 | RF Wireless Remote Control |
| MUA008A | Make-Up Air Kit |

DID YOU KNOW Zephyr LumiLight LED lights are covered under the same 3 year warranty as all internal parts. Zephyr is the first and only range hood manufacturer to warranty lights.

Finish: (S)-Stainless Steel
Warranty: 3 years non-consumable parts, 1 year labor

WALL

DESIGNER COLLECTION



APEX WALL

DESIGNER COLLECTION



VISTA WALL

MODEL FINISH SIZE W x D

APEX Vertical-Style Wall Hood w/ LED Lighting - BODY ONLY*

| | | |
|-------------|-----------------|---------------------|
| DAP-M90AMBX | Matte Blk Glass | 35 3/8" x 19 13/16" |
| DAP-M90AMWX | Matte Wht Glass | 35 3/8" x 19 13/16" |

- Max. Blower CFM: 290-1,000 (not included)
- 3-speed capacitive touch controls
- CleanAir function
- 6" or 8" round vertical ducting
- 6" or 8" round horizontal ducting
- Wireless remote control option
- 5W LED lights
- Tri-level lighting
- Aluminum mesh filters

Accessories and Blowers

| | |
|------------|---|
| ZRC-00AP | Recirculating Kit (w/ charcoal filter) |
| ZOF-C010 | Charcoal Filter Replacement (2 per kit) |
| Z1C-00MEMB | Duct Cover, Matte Blk (For up to 10'6" ceiling) |
| Z1C-00MESS | Duct Cover, SS (For up to 10'6" ceiling) |
| CBI-290C | 290 CFM Internal Blower (6" round duct) |
| CBI-390A | 390 CFM Internal Blower (6" round duct) |
| CBI-600A | 600 CFM Internal Blower (6" round duct) |
| PBN-1000A | 1,000 CFM In-line Blower (8" round duct**) |
| CBE-1000 | 1,000 CFM External Blower (8" round duct**) |
| RC-0003 | RF Wireless Remote Control |
| MUA006A | Make-Up Air Kit (600 CFM) |
| MUA008A | Make-Up Air Kit (1,000 CFM) |

*Requires purchase of Zephyr internal, external or in-line blower, sold separately.
**10" round duct connects to external or in-line blower. Must transition from 10" to 8" before duct passes through ceiling. 10" to 8" adapter included with in-line and external blowers.

VISTA Low-Profile Wall Hood w/ PAS Panel and LED Lighting - BODY ONLY*

| | | |
|-------------|---|---------------|
| DVS-E30ASSX | S | 30" x 18 7/8" |
| DVS-E36ASSX | S | 36" x 18 7/8" |

- Max. Blower CFM: 290-1,000 (not included)
- 3-speed invisible touch controls
- Wireless remote control option
- Accommodates 9' ceiling height
- 6" or 8" round vertical ducting
- Perimeter aspiration system
- Aluminum mesh filters
- 2 1/8" body height
- 5W LED lights
- Tri-level lighting
- CleanAir function

Accessories and Blowers

| | |
|-----------|--|
| ZRC-00VS | Recirculating Kit (w/ charcoal filter) |
| ZOF-C010 | Charcoal Filter Replacement (2 per kit) |
| Z1C-00VS | Duct Cover Extension, SS (For up to 12' ceiling) |
| CBI-290C | 290 CFM Internal Blower (6" round duct) |
| CBI-390A | 390 CFM Internal Blower (6" round duct) |
| CBI-600A | 600 CFM Internal Blower (6" round duct) |
| PBN-1000A | 1,000 CFM In-line Blower (8" round duct**) |
| CBE-1000 | 1,000 CFM External Blower (8" round duct**) |
| RC-0003 | RF Wireless Remote Control |
| MUA006A | Make-Up Air Kit (600 CFM) |
| MUA008A | Make-Up Air Kit (1,000 CFM) |

*Requires purchase of Zephyr internal, external or in-line blower, sold separately.
**10" round duct connects to external or in-line blower. Must transition from 10" to 8" before duct passes through ceiling. 10" to 8" adapter included with in-line and external blowers.

Finish: (Matte Blk)-Matte Black (Matte Wht)-Matte White (S)-Stainless Steel
Warranty: 2 years non-consumable parts, 1 year labor

WALL

DESIGNER COLLECTION



MESA WALL

MODEL FINISH SIZE W x D

MESA European Pro-Style Hood w/ LED Lighting - BODY ONLY*

| | | |
|-------------|------------|---------------------|
| DME-M90AMBX | Matte Blk | 35 5/16" x 19 1/16" |
| DME-M90ASSX | S | 35 5/16" x 19 1/16" |
| DME-M90ASGX | Satin Gold | 35 5/16" x 19 1/16" |
| DME-E48AMBX | Matte Blk | 48" x 19 1/16" |
| DME-E48ASSX | S | 48" x 19 1/16" |
| DME-E48ASGX | Satin Gold | 48" x 19 1/16" |

- Max. Blower CFM: 290-1,000 (not included)
- 3-speed invisible touch controls
- CleanAir function
- 6" or 8" round vertical ducting
- 6" or 8" round horizontal ducting
- Wireless remote control option
- 5W LED lights
- Tri-level lighting
- Hybrid baffle filters

Accessories and Blowers

| | |
|-----------------|--|
| ZRC-01ME | Recirculating Kit (w/ charcoal filter) |
| ZOF-C010 | Charcoal Filter Replacement (2 per kit) |
| ZIC-00MEMB | Duct Cover, Matte Blk (For up to 10'6" ceiling) |
| ZIC-00MESS | Duct Cover, SS (For up to 10'6" ceiling) |
| ZIC-00MESG | Duct Cover, Satin Gold (For up to 10'6" ceiling) |
| MERAIL-00MB | Accent Rail, Matte Black, 36" |
| MERAIL-00SS | Accent Rail, Stainless, 36" |
| MERAIL-00SG | Accent Rail, Satin Gold, 36" |
| MERAIL-01MB | Accent Rail, Matte Black, 48" |
| MERAIL-01SS | Accent Rail, Stainless, 48" |
| MERAIL-01SG | Accent Rail, Satin Gold, 48" |
| CBI-290C | 290 CFM Internal Blower (6" round duct) |
| CBI-390A | 390 CFM Internal Blower (6" round duct) |
| CBI-600A | 600 CFM Internal Blower (6" round duct) |
| PBI-1100B-DME** | 1,100 CFM Internal Blower (10" round duct) |
| PBN-1000A | 1,000 CFM In-line Blower (8" round duct***) |
| CBE-1000 | 1,000 CFM External Blower (8" round duct***) |
| RC-0003 | RF Wireless Remote Control |
| MUA006A | Make-Up Air Kit (600 CFM) |
| MUA008A | Make-Up Air Kit (1,000 CFM) |

*Requires purchase of Zephyr internal, external or in-line blower, sold separately.

**48" model only.

***10" round duct connects to external or in-line blower. Must transition from 10" to 8" before duct passes through ceiling. 10" to 8" adapter included with in-line and external blowers.

DESIGNER COLLECTION



LAYERS WALL

LAYERS Designer Wall Hood w/ PAS Panel and LED Lighting - BODY ONLY*

| | | |
|-------------|---|-----------|
| DLA-M90ASSX | S | 36" x 22" |
| DLA-E42ASSX | S | 42" x 22" |

- Max. Blower CFM: 290-1,000 (not included)
- 3-speed invisible touch controls
- Wireless remote control option
- Accommodates 9'5" ceiling height
- 6" or 8" round vertical ducting
- Perimeter aspiration system
- Aluminum mesh filters
- 1 3/4" body height
- 5W LED lights
- Tri-level lighting
- CleanAir function

Accessories and Blowers

| | |
|-----------|--|
| ZRC-00VS | Recirculating Kit (w/ charcoal filter) |
| ZOF-C010 | Charcoal Filter Replacement (2 per kit) |
| ZIC-00VS | Duct Cover Extension, SS (For up to 12' ceiling) |
| CBI-290C | 290 CFM Internal Blower (6" round duct) |
| CBI-390A | 390 CFM Internal Blower (6" round duct) |
| CBI-600A | 600 CFM Internal Blower (6" round duct) |
| PBN-1000A | 1,000 CFM In-line Blower (8" round duct**) |
| CBE-1000 | 1,000 CFM External Blower (8" round duct**) |
| RC-0003 | RF Wireless Remote Control |
| MUA006A | Make-Up Air Kit (600 CFM) |
| MUA008A | Make-Up Air Kit (1,000 CFM) |

*Requires purchase of Zephyr internal, external or in-line blower, sold separately.

**10" round duct connects to external or in-line blower. Must transition from 10" to 8" before duct passes through ceiling. 10" to 8" adapter included with in-line and external blowers.

Finish: (Matte Blk)-Matte Black (S)-Stainless Steel

Warranty: 2 years non-consumable parts, 1 year labor

WALL

DESIGNER COLLECTION



HORIZON WALL

DESIGNER COLLECTION



OKEANITO WALL
BRUSHED GOLD

MODEL FINISH SIZE W x D

HORIZON Designer Wall Hood w/ LED Lighting - BODY ONLY*

| | | |
|-------------|-----------------|-------------------|
| DHZ-M90AMBX | Matte Blk Glass | 35 3/8" x 20 1/8" |
| DHZ-M90AMWX | Matte Wht Glass | 35 3/8" x 20 1/8" |

- Max. Blower CFM: 290-1,000 (not included)
- 3-speed capacitive touch controls
- CleanAir function
- Hybrid baffle filters
- 6" or 8" round vertical ducting
- 6" or 8" round horizontal ducting
- Wireless remote control option
- Ambient lighting
- 5W LED lights
- Tri-level lighting
- Dual capture zones

Accessories and Blowers

| | |
|-----------|---|
| ZOF-C010 | Recirculating Kit (w/ charcoal filters) |
| ZIC-01HZ | Duct Cover, SS (For up to 9' - 10' ceiling) |
| CBI-290C | 290 CFM Internal Blower (6" round duct) |
| CBI-390A | 390 CFM Internal Blower (6" round duct) |
| CBI-600A | 600 CFM Internal Blower (6" round duct) |
| PBN-1000A | 1,000 CFM In-line Blower (8" round duct**) |
| CBE-1000 | 1,000 CFM External Blower (8" round duct**) |
| RC-0003 | RF Wireless Remote Control |
| MUA006A | Make-Up Air Kit (600 CFM) |
| MUA008A | Make-Up Air Kit (1,000 CFM) |

*Requires purchase of Zephyr internal, external or in-line blower, sold separately.

**10" round duct connects to external or in-line blower. Must transition from 10" to 8" before duct passes through ceiling. 10" to 8" adapter included with in-line and external blowers.

OKEANITO Designer Wall Hood w/ LED Lighting - BODY ONLY*

| | | |
|-------------|----|---------------|
| COK-E36CSX | S | 36" x 22 3/4" |
| COK-E36CBGX | BG | 36 x 22 3/4" |
| COK-E42CSX | S | 42 x 22 3/4" |
| COK-E42CBGX | BG | 42 x 22 3/4" |
| COK-E48CSX | S | 48 x 22 3/4" |
| COK-E48CBGX | BG | 48 x 22 3/4" |

- Max. Blower CFM: 290-1,000 (not included)
- 3-speed electronic controls
- Wireless remote option
- Accommodates 10 1/2" ceiling height
- 6" or 8" round vertical ducting
- Auto delay-off
- Pro baffle filters
- CleanAir function
- LumiLight LED lights
- Dual-level lighting
- 4W LED ambient lights

*Requires purchase of Zephyr blower, sold separately.

Accessories and Blowers

| | |
|-----------|--|
| ZIC-000K | Duct Cover Extension, SS (For up to a 12' ceiling) |
| CBI-290C | 290 CFM Internal Blower (6" round duct) |
| CBI-390A | 390 CFM Internal Blower (6" round duct) |
| CBI-600A | 600 CFM Internal Blower (6" round duct) |
| PBN-1000A | 1,000 CFM In-Line Blower (10" to 8" round duct**) |
| CBE-1000 | 1,000 CFM External Blower (10" or 8" round duct**) |
| 14000005 | RF Wireless Remote Control |
| MUA006A | Make-Up Air Kit (600 CFM) |
| MUA008A | Make-Up Air Kit (1,000 CFM) |

**10" round duct connects to external/in-line blower. Must transition from 10" to 8" before duct passes through ceiling. 10" to 8" adapter included with external/in-line blower.

Finish: (Matte Blk)-Matte Black (Matte Wht)-Matte White (S)-Stainless Steel (BG)-Brushed Gold
Warranty: 2 years non-consumable parts, 1 year labor (DHZ); 3 years non-consumable parts, 1 year labor (COK)

WALL



FORTE
ACT™



shown with optional satin gold banding and 12" duct cover



shown with optional matte black banding and 18" duct cover

MODEL FINISH SIZE W x D

FORTE 30in Tall Custom Hood w/ Polished Stainless Steel Banding

| | | |
|-----------|---|-----------|
| CHFT36ASX | S | 36" x 22" |
| CHFT48ASX | S | 48" x 22" |

- Stainless Steel with Polished Stainless Steel Banding
- Hood Inserts Sold Separately
- Removable Front Panel for Easy Installation
- Optional 12" or 18" Duct Covers with Polished Stainless Steel Banding
- Optional Hood Banding Kit in Satin Gold or Matte Black
- Optional Duct Cover Banding Kit in Satin Gold or Matte Black

Accessories and Blowers

| | |
|--------------|---|
| DC13612AS | 12" Duct Cover w/ Polished SS Banding (36") |
| DC13618AS | 18" Duct Cover w/ Polished SS Banding (36") |
| DC14812AS | 12" Duct Cover w/ Polished SS Banding (48") |
| DC14818AS | 18" Duct Cover w/ Polished SS Banding (48") |
| BKFT36AMB | Hood Banding Kit, Matte Black (36") |
| BKFT36ASG | Hood Banding Kit, Satin Gold (36") |
| BKFT48AMB | Hood Banding Kit, Matte Black (48") |
| BKFT48ASG | Hood Banding Kit, Satin Gold (48") |
| BKDC13612AMB | 12" Duct Cover Banding Kit, Matte Black (36") |
| BKDC13612ASG | 12" Duct Cover Banding Kit, Satin Gold (36") |
| BKDC13618AMB | 18" Duct Cover Banding Kit, Matte Black (36") |
| BKDC13618ASG | 18" Duct Cover Banding Kit, Satin Gold (36") |
| BKDC14812AMB | 12" Duct Cover Banding Kit, Matte Black (48") |
| BKDC14812ASG | 12" Duct Cover Banding Kit, Satin Gold (48") |
| BKDC14818AMB | 18" Duct Cover Banding Kit, Matte Black (48") |
| BKDC14818ASG | 18" Duct Cover Banding Kit, Satin Gold (48") |

Compatible Hood Inserts (Sold Separately)



Monsoon Mini
AK9134BS



Monsoon Mini II
AK9534AS
AK9546AS



Monsoon I
AK9234BS
AK9246BS



Monsoon Connect
AK9434BS
AK9446BS

See pages 29, 30 for details of above Hood Inserts.

Finish: (S)-Stainless Steel
Warranty: 3 years non-consumable parts, 1 year labor

ISLAND

CORE COLLECTION



ROMA ISLAND
ACT™

MODEL FINISH SIZE W x D

ROMA IS. 600 CFM Contemporary Island Hood w/ ACT™ & LED lights

| | | |
|-----------|---|-----------|
| ZRM-E36FS | S | 36" x 27" |
| ZRM-E42FS | S | 42" x 27" |

- Max. Blower CFM: 600
- ACT Max. Blower CFM: 390, 290
- Accommodates 9'1" ceiling height
- Quick-lock installation with magnetic duct covers
- 5-speed ICON Touch® controls
- 6" round vertical ducting
- Auto delay-off
- 6W LumiLight LED lights
- Dual-level lighting
- Aluminum mesh filters

Accessories

| | |
|----------|---|
| ZRC-02RM | Recirculating Kit (w/ charcoal filters)- 36" model |
| ZRC-01RM | Recirculating Kit (w/ charcoal filters) - 42" model |
| ZOF-C002 | Charcoal Filter Replacement |
| ZIC-01RM | Duct Cover Extension (For up to a 12' ceiling) |
| MUA006A | Make-Up Air Kit |
| RC-0002 | Wireless RF Remote Control Kit |

CORE COLLECTION



ANZIO ISLAND
ACT™

ANZIO IS. 600 CFM Low-Profile Modern Island Hood w/ ACT™ & LED lights

| | | |
|-----------|---|---------------------|
| ZAZ-M90DS | S | 35 7/16" x 25 9/16" |
| ZAZ-E42DS | S | 42" x 25 9/16" |

- Max. Blower CFM: 600
- ACT Max. Blower CFM: 390, 290
- Accommodates 10' ceiling height
- Quick-lock installation with magnetic duct covers
- 5-speed ICON Touch® controls
- 6" round vertical ducting
- Auto delay-off
- 6W LumiLight LED lights
- Dual-level lighting
- Aluminum mesh filters

Accessories

| | |
|----------|--|
| ZRC-02AZ | Recirculating Kit |
| ZOF-C091 | Charcoal Filter Replacement |
| ZIC-00AZ | Duct Cover Extension (For up to a 12' ceiling) |
| MUA006A | Make-Up Air Kit |
| ZOF-B002 | Hybrid Baffle Filter Kit (2 filters) |
| RC-0002 | Wireless RF Remote Control Kit |

CORE COLLECTION



RAVENNA ISLAND
ACT™

RAVENNA IS. 600 CFM Black Stainless Steel Island Hood w/ Smoke Gray Glass Canopy, ACT™ & LED lights

| | | |
|--------------|--------|---------------------|
| ZRE-M90BBSGG | Blk SS | 35 3/16" x 25 9/16" |
| ZRE-E42BBSGG | Blk SS | 42" x 25 9/16" |

- Max. Blower CFM: 600
- ACT Max. Blower CFM: 390, 290
- Accommodates 9' ceiling height
- Quick-lock installation with magnetic duct covers
- 5-speed ICON Touch® controls
- 6" round vertical ducting
- Auto delay-off
- 6W LumiLight LED lights
- Dual-level lighting
- Aluminum mesh filters

Accessories

| | |
|------------|--|
| ZRC-00RE | Recirculating Kit (w/ charcoal filters) |
| ZOF-C002 | Charcoal Filter Replacement |
| ZIC-00REBS | Duct Cover Extension (For up to a 12' ceiling) |
| MUA006A | Make-Up Air Kit |
| RC-0002 | Wireless RF Remote Control Kit |

DID YOU KNOW Zephyr island hoods with Quick-lock installation are the easiest island hoods to install in the market.

Finish: (S)-Stainless Steel (Blk SS)-Black Stainless Steel w/ Smoke Gray Glass
Warranty: 3 years non-consumable parts, 1 year labor

ISLAND



MODENA ISLAND
ACT™

MODEL FINISH SIZE W x D

MODENA IS. 600 CFM Thin Profile Island Hood w/ LED Lighting and ACT™

| | | |
|-----------|---|--------------------|
| ZMD-M9OBS | S | 35 7/16" x 27 1/2" |
| ZMD-E42BS | S | 42" x 27 1/2" |

- Max. Blower CFM: 600
- ACT Max. Blower CFM: 390, 290
- Accommodates 10' ceiling height
- Quick-lock installation with magnetic duct covers
- 5-speed ICON Touch® controls
- 8" round vertical ducting
- Auto delay-off
- 6W LumiLight LED lights
- Dual-level lighting
- Aluminum mesh filters

Accessories

| | |
|----------|--|
| ZRC-00MD | Recirculating Kit (w/ charcoal filter) |
| ZOF-C002 | Charcoal Filter Replacement |
| ZIC-00MD | Duct Cover Extension (For up to a 12' ceiling) |
| MUA006A | Make-Up Air Kit |



LUCÉ ISLAND
ACT™

LUCÉ IS. 600 CFM Island Hood w/ LED Accent Lighting, ACT™ & LED lights

| | | |
|-----------|---|---------------------|
| ZLC-M9OCS | S | 35 7/16" x 25 9/16" |
| ZLC-E42CS | S | 42" x 25 9/16" |

- Max. Blower CFM: 600
- ACT Max. Blower CFM: 390, 290
- Accommodates 9'8" ceiling
- Quick-lock installation with magnetic duct covers height
- 5-speed ICON Touch® controls
- 6" round vertical ducting
- Auto delay-off
- 6W LumiLight LED lights
- Dual-level lighting
- Aluminum mesh filters

Accessories

| | |
|----------|--|
| ZRC-00LC | Recirculating Kit (w/ charcoal filters) |
| ZOF-C092 | Charcoal Filter Replacement |
| ZIC-00LC | Duct Cover Extension (For up to a 12' ceiling) |
| MUA006A | Make-Up Air Kit |
| RC-0002 | Wireless RF Remote Control Kit |

Lucé island illuminates in cloud white, deep blue and amber.



VERONA ISLAND
ACT™

VERONA IS. 600 CFM LED Illuminated Glass Island Hood w/ LED Lighting and ACT™

| | | |
|-----------|------------|---------------------|
| ZVN-M9OBG | S w/ Glass | 35 7/16" x 27 7/16" |
| ZVN-E42BG | S w/ Glass | 42" x 27 7/16" |

- Max. Blower CFM: 600
- ACT Max. Blower CFM: 390, 290
- Accommodates 10' ceiling height
- Quick-lock installation with magnetic duct covers
- Aluminum mesh filters
- 5-speed ICON Touch® controls
- 8" round vertical ducting
- Auto delay-off
- 6W LumiLight LED lights
- Dual-level lighting
- 3 color LED illuminated glass

Accessories

| | |
|----------|--|
| ZRC-00VN | Recirculating Kit (w/ charcoal filters) |
| ZOF-C002 | Charcoal Filter Replacement |
| ZIC-00VN | Duct Cover Extension (For up to a 12' ceiling) |
| MUA006A | Make-Up Air Kit |

Verona Island glass illuminates in cloud white, deep blue and amber.

DID YOU KNOW Lucé & Verona models have a "demo mode" that cycles through each of the three LED accent light colors every 10 seconds. To enable demo mode, hold down the "accent light" button on the bottom of the hood for 3 seconds.

Finish: (S)-Stainless Steel
Warranty: 3 years non-consumable parts, 1 year labor

ISLAND

CORE COLLECTION



MILANO ISLAND



CORE COLLECTION



NAPOLI ISLAND



DESIGNER COLLECTION



VISTA ISLAND

MODEL FINISH SIZE W x D

MILANO IS. 700 CFM Curved Canopy Island Hood w/ Zephyr Connect, PowerWave™ Blower & ACT™

| | | |
|-----------|------------|---------------------|
| ZML-M90CG | S w/ Glass | 35 7/16" x 25 9/16" |
| ZML-M90CS | S | 35 7/16" x 25 9/16" |
| ZML-E42CG | S w/ Glass | 42" x 25 9/16" |
| ZML-E42CS | S | 42" x 25 9/16" |

- Max. Blower CFM: 700
- ACT Max. Blower CFM: 590, 390, 290
- CleanAir function
- Zephyr Connect app compatible
- 6-speed proximity controls
- 8" round vertical ducting
- Accommodates 10' ceiling height
- Aluminum mesh filters
- 6W LumiLight LED lights
- Tri-level lighting
- Auto delay-off
- Quick-lock installation with magnetic duct covers

Accessories

| | |
|----------|--|
| ZRC-00ML | Recirculating Kit (w/ charcoal filters) |
| ZOF-C002 | Charcoal Filter Replacement |
| ZIC-03ML | Duct Cover Extension (For up to a 12' ceiling) |
| 14000005 | RF Wireless Remote Control |
| MUA008A | Make-Up Air Kit |

NAPOLI IS. 700 CFM Island Hood w/ Zephyr Connect, PowerWave™ Blower, Baffle Filters & ACT™

| | | |
|-----------|---|---------------------|
| ZNA-M90DS | S | 35 7/16" x 25 9/16" |
| ZNA-E42DS | S | 42" x 25 9/16" |

- Max. Blower CFM: 700
- ACT Max. Blower CFM: 590, 390, 290
- Baffle filters
- Quick-lock installation with magnetic duct covers
- Zephyr Connect app compatible
- 6-speed proximity controls
- 8" round vertical ducting
- Accommodates 10' ceiling height
- CleanAir function
- 6W LumiLight LED lights
- Tri-level lighting
- Auto delay-off

Accessories

| | |
|----------|--|
| ZRC-03NA | Recirculating Kit (w/ charcoal filters) |
| ZOF-C091 | Charcoal Filter Replacement |
| ZIC-02NA | Duct Cover Extension (For up to a 12' ceiling) |
| 14000005 | RF Wireless Remote Control |
| MUA008A | Make-Up Air Kit |

VISTA IS. Low-Profile Island Hood w/ PAS Panel and LED Lighting- BODY ONLY*

| | | |
|-------------|---|---------------|
| DVL-E36ASSX | S | 36" x 23 5/8" |
| DVL-E42ASSX | S | 42" x 23 5/8" |

- Max. Blower CFM: 290-1,000 (not included)
- 3-speed invisible touch controls
- Wireless remote control option
- Accommodates 10' ceiling height
- 6" or 8" round vertical ducting
- Perimeter aspiration system
- Aluminum mesh filters
- 2 1/8" body height
- 5W LED lights
- Tri-level lighting
- CleanAir function

Accessories and Blowers

| | |
|-----------|--|
| ZRC-00VL | Recirculating Kit (w/ charcoal filter) |
| ZOF-C010 | Charcoal Filter Replacement (2 per kit) |
| ZIC-00VL | Duct Cover Extension, SS (For up to 12' ceiling) |
| CBI-290C | 290 CFM Internal Blower (6" round duct) |
| CBI-390A | 390 CFM Internal Blower (6" round duct) |
| CBI-600A | 600 CFM Internal Blower (6" round duct) |
| PBN-1000A | 1,000 CFM In-line Blower (8" round duct**) |
| CBE-1000 | 1,000 CFM External Blower (8" round duct**) |
| RC-0003 | RF Wireless Remote Control |
| MUA006A | Make-Up Air Kit (600 CFM) |
| MUA008A | Make-Up Air Kit (1,000 CFM) |

*Requires purchase of Zephyr internal, external or in-line blower, sold separately.
**10" round duct connects to external or in-line blower. Must transition from 10" to 8" before duct passes through ceiling. 10" to 8" adapter included with in-line and external blowers.

Finish: (S)-Stainless Steel

Warranty: 3 years non-consumable parts, 1 year labor (ZML, ZNA); 2 years non-consumable parts, 1 year labor (DVL)

ISLAND



SIENA PRO ISLAND
ACT™

MODEL FINISH SIZE W x D

SIENA PRO IS. 1,200 CFM Pro Island Hood w/ Hybrid Baffle Filers, ACT™ & LED lights

| | | |
|-----------|---|-----------|
| ZSL-E36DS | S | 36" x 28" |
| ZSL-E42DS | S | 42" x 28" |
| ZSL-E48DS | S | 48" x 28" |

- Max. Blower CFM: 1,200
- ACT Max. Blower CFM: 590, 390
- Quick-lock installation with magnetic duct covers
- Auto delay-off
- 5-speed ICON Touch™ LCD controls
- 10" round vertical ducting
- Accommodates 9'10" ceiling height
- 6W LumiLight LED lights
- TruHue™ dimmable, color-tunable, dual-level lighting
- Hybrid baffle filters
- Single-piece and seamless body

Accessories

| | |
|----------|--|
| Z1C-02SL | Duct Cover Extension (For up to a 12' ceiling) |
| MUA010A | Make-Up Air Kit |
| RC-0002 | Wireless RF Remote Control Kit |



TITAN ISLAND
ACT™

TITAN IS. 750 CFM Pro-Style Island Hood w/ PowerWave™ Blower, ACT™ & LED lights

| | | |
|----------|---|---------------|
| AK7736BS | S | 36" x 31 5/8" |
| AK7742BS | S | 42" x 31 5/8" |
| AK7748BS | S | 48" x 31 5/8" |
| AK7754BS | S | 54" x 31 5/8" |

- Max. Blower CFM: 750 (included)
- Max. Blower CFM: 1,300 (optional)
- ACT Max. Blower CFM: 590, 390, 290
- Auto delay-off
- CleanAir function
- 8" or 10" round vertical & horizontal ducting
- Dual-level lighting
- Accommodates 10'2" ceiling height
- Directional lighting
- 6W LumiLight LED lights
- Pro baffle filters
- 6-speed LCD controls
- Wireless remote option

Accessories

| | |
|-----------|---|
| PBD-1300B | 1,300 CFM Internal Blower Kit (10" round duct) |
| Z1C-0077 | Duct Cover Extension - 36", 42" (For a 10'-12' ceiling) |
| Z1C-0177 | Duct Cover Extension - 48", 54" (For a 10'-12' ceiling) |
| 14000005 | RF Wireless Remote Control |
| MUA008A | Make-Up Air Kit (750 CFM) |
| MUA010A | Make-Up Air Kit (1,300 CFM) |



TRAPEZE

TRAPEZE Designer Island Hood w/ LED Lighting - BODY ONLY*

| | | |
|------------|---|---------------|
| CTP-E36CSX | S | 36" x 26 5/8" |
| CTP-E48CSX | S | 48" x 26 5/8" |
| CTP-E54CSX | S | 54" x 26 5/8" |
| CTP-E60CSX | S | 60" x 26 5/8" |

- Max. Blower CFM: 290-1,000 (not included)
- 3-speed electronic controls
- Accommodates 10'4" ceiling height
- CleanAir function
- 6" or 8" round vertical ducting
- Auto delay-off
- Pro baffle filters
- LumiLight LED lights
- Dual-level lighting
- Wireless remote option

Accessories and Blowers

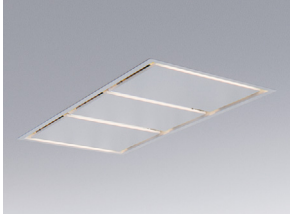
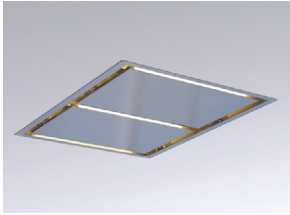
| | |
|-----------|--|
| Z1C-00TP | Duct Cover Extension (For up to a 12' ceiling) |
| CBI-290C | 290 CFM Internal Blower (6" round duct) |
| CBI-390A | 390 CFM Internal Blower (6" round duct) |
| CBI-600A | 600 CFM Internal Blower (6" round duct) |
| PBN-1000A | 1,000 CFM In-Line Blower (10" to 8" round duct**) |
| CBE-1000 | 1,000 CFM External Blower (10" or 8" round duct**) |
| 14000005 | RF Wireless Remote Control |
| MUA006A | Make-Up Air Kit (600 CFM) |
| MUA008A | Make-Up Air Kit (1,000 CFM) |

*Requires purchase of Zephyr blower, sold separately.
**10" round duct connects to external/in-line blower. Must transition from 10" to 8" before duct passes through ceiling. 10" to 8" adapter included with external/in-line blowers.

Finish: (S)-Stainless Steel
Warranty: 3 years non-consumable parts, 1 year labor

ISLAND /
IN-CEILING

DESIGNER COLLECTION



LUX CONNECT

TOP: 43" model shown in stainless steel
BOTTOM: 63" model shown in white



MODEL FINISH SIZE W x D

LUX Designer In-Ceiling Hood w/ Zephyr Connect, PAS Panels and LED Lighting - BODY ONLY

| | | |
|------------|---|-------------------|
| ALU-E43CSX | S | 43-3/8" x 27-1/2" |
| ALU-E43CWX | W | 43-3/8" x 27-1/2" |
| ALU-E63CSX | S | 63-3/8" x 27-1/2" |
| ALU-E63CWX | W | 63-3/8" x 27-1/2" |

- Max. Blower CFM: 290-1,100 (not included)
- 3-speed capacitive touch controls
- CleanAir function
- Aluminum mesh filters
- Perimeter aspiration system
- 6" or 10" round ducting
- Vertical and horizontal ducting
- Zephyr Connect app compatible
- 10W LED light strips
- Tri-level lighting
- Wireless remote control

Accessories and Blowers

| | |
|-----------|--|
| ZRC-01LX* | Recirculating Kit (w/ charcoal filters) |
| ZOF-C002 | Charcoal Filter Replacement |
| CBI-290C | 290 CFM Internal Blower (6" round duct) |
| CBI-390A | 390 CFM Internal Blower (6" round duct) |
| CBI-600A | 600 CFM Internal Blower (6" round duct) |
| PBI-1100B | 1,100 CFM Internal Blower (10" round duct) |
| PBN-1000A | 1,000 CFM In-line Blower (10" round duct) |
| CBE-1000 | 1,000 CFM External Blower (10" round duct) |
| MUA006A | Make-Up Air Kit (600 CFM) |
| MUA008A | Make-Up Air Kit (1,000 CFM) |
| MUA010A | Make-Up Air Kit (1,100 CFM) |

*ZRC-01LX recirculating kit is compatible with CBI-290C and CBI-600A internal blowers only.

DID YOU KNOW The Perimeter Aspiration System moves airflow away from the central area of the hood and evenly distributes it through narrow openings around the perimeter of the hood. This ventilation method increases air velocity and improves the capture of cooking contaminants. Available in select models: ZPY, DLA, DVS, DVL, ALU, and AK85

DOWNDRAFT

CORE COLLECTION



TREVISO DOWNDRAFT

TREVISO 600 CFM Downdraft Hood w/ 14" Rise

| | | |
|-----------|---|-----|
| ZTV-E30AS | S | 30" |
| ZTV-E36AS | S | 36" |

- Max. Blower CFM: 600
- 3-speed mechanical slide controls
- ACT Max. Blower CFM: 390
- 3-way ducting*
- 14" chimney rise
- Recirculating option
- 6" round ducting
- Stainless steel mesh filters
- Reversible blower housing

Accessories

| | |
|----------|---|
| ZRC-00TV | Recirculating Kit (w/ charcoal filters) |
| ZOF-C006 | Charcoal Filter Replacement |
| DDA-0003 | Wired Remote Up/Down Control |
| DDT-0130 | Range Trim Kit (For ZTV-E30AS) |
| DDT-0136 | Range Trim Kit (For ZTV-E36AS) |
| MUA006A | Make-Up Air Kit |

*3-Way Ducting includes left, right and bottom of blower housing.

DID YOU KNOW Treviso is compatible with multiple cooking appliance configurations thanks to the reversible blower housing.



COOKTOP



OVEN + COOKTOP



RANGE TOP



RANGE*

*To achieve a cooktop + oven + range installation, the blower must be relocated to the back of the downdraft. The cabinet depth behind the downdraft must be a minimum of 12".

Finish: (S)-Stainless Steel (W)-Powder Coated White
Warranty: 1 year non-consumable parts, 1 year labor (ALU-E); 2 years non-consumable parts, 1 year labor (ZTV-E)

DOWNDRAFT

DESIGNER COLLECTION



LIFT DOWNDRAFT

MODEL FINISH SIZE W x D

LIFT 18" Chimney Rise Downdraft Hood w/ LED Lighting

| | | |
|------------|---|-----|
| DLI-E30ASX | S | 30" |
| DLI-E36ASX | S | 36" |

- Max. Blower CFM: 400-1,000 (not included)
- Tri-capture zones
- 3-speed capacitive touch controls
- 4-way ducting*
- 18" chimney rise
- Aluminum mesh filters
- BriteStrip™ LED lighting (3000K)
- Dual-level lighting
- Recirculating option

Accessoires et moteurs

| | |
|-----------|--|
| ZRC-00LF | Recirculating Kit (w/ charcoal filters) |
| ZOF-C006 | Charcoal Filter Replacement |
| DDA-0002 | Wired Remote Up/Down Control |
| DBI-600A | 600 CFM Internal Blower (400 CFM configurable) |
| PBN-1000A | 1,000 CFM In-line Blower |
| CBE-1000 | 1,000 CFM External Blower |
| DDS-0030 | Gas Cooktop Seal Kit (For DLI-E30ASX) |
| DDS-0036 | Gas Cooktop Seal Kit (For DLI-E36ASX) |
| DDT-0030 | Range Trim Kit (For DLI-E30ASX) |
| DDT-0036 | Range Trim Kit (For DLI-E36ASX) |
| 11030132 | 5' Extension Cable |
| DDE-0001 | End Cap Trim Extension |
| 54190053 | Front Panel Rough-In Plate, 8" |
| 54190054 | Front Panel Rough-In Plate, 10" |
| AK00070 | 1-7/8" x 19" to 8" Round Transition |
| AK00071 | 1-7/8" x 19" to 10" Round Transition |
| AK00072 | 1-7/8" x 19" Adapter for AK00080 Duct |
| AK00080 | 1-7/8" x 19" Rectangular Duct, 2' |
| MUA006A | Make-Up Air Kit (600 CFM) |
| MUA008A | Make-Up Air Kit (1,000 CFM) |

*4-Way Ducting includes the front, side (L & R), rear and bottom of blower housing.

DID YOU KNOW Lift is compatible with multiple cooking appliance configurations.



COOKTOP



OVEN + COOK TOP



RANGE TOP



RANGE

Check out the Lift Downdraft Configurator on [Zephyr's website](#) to help determine what components are needed for installation.

CORE COLLECTION



SORRENTO DOWNDRAFT

SORRENTO 500 CFM Downdraft Hood w/ 9-1/2" Rise

| | | |
|-----------|---|-----|
| DD1-E30AS | S | 30" |
| DD1-E36AS | S | 36" |

- Max. Blower CFM: 500
- Variable speed controls
- HVI certified
- Decorative mesh filters
- 3 1/4"x10" three position ducting*

Accessories

| | |
|----------|------------------------------|
| DDA-0001 | Wired Remote Up/Down Control |
| MUA006A | Make-Up Air Kit |

*Three position ducting includes the left, right, or bottom of blower housing.

Finish: (S)-Stainless Steel
Warranty: 2 years non-consumable parts, 1 year labor

INSERT

CORE COLLECTION



TORNADO MINI

MODEL FINISH SIZE W x D

TORNADO MINI 400 CFM Insert w/ Recirculating Option and LED Lighting

| | | |
|--|---|--|
| AK8400BS | S | 20 9/16" x 11" |
| <ul style="list-style-type: none"> • Max. Blower CFM: 400 • 3-speed slide controls • Stainless steel liner option | <ul style="list-style-type: none"> • 6" round vertical ducting • Insert height 9 1/16" • Aluminum mesh filters | <ul style="list-style-type: none"> • 6W LumiLight LED lights • Dual-level lighting |

Accessories

| | |
|-----------|---|
| ZRC-8400A | Recirculating Kit (w/ charcoal filters) |
| ZOF-C084 | Charcoal Filter Replacement |
| AK0840AS | 17 1/2" - 20 1/2" Depth SS Liner (For 30" hood) |
| AK0846AS | 17 1/2" - 20 1/2" Depth SS Liner (For 36" hood) |

CORE COLLECTION



TORNADO MINI ES



TORNADO MINI ES 290 CFM ENERGY STAR Insert w/ LED Lighting

| | | |
|--|--|--|
| AK8400BS-ES | S | 20 9/16" x 11" |
| <ul style="list-style-type: none"> • Max. Blower CFM: 290 • 3-speed slide controls • ENERGY STAR® certified | <ul style="list-style-type: none"> • 6" round vertical ducting • Insert height 9 1/16" • Stainless steel liner option | <ul style="list-style-type: none"> • 7W LumiLight LED lights • Dual-level lighting • Aluminum mesh filter |

Accessories

| | |
|----------|---|
| AK0840AS | 17 1/2" - 20 1/2" Depth SS Liner (For 30" hood) |
| AK0846AS | 17 1/2" - 20 1/2" Depth SS Liner (For 36" hood) |

CORE COLLECTION



TWISTER

TWISTER 400 CFM Insert w/ Recirculating Option and LED Lighting

| | | |
|---|---|--|
| AK8000CS | S | 27 9/16" x 11 13/16" |
| <ul style="list-style-type: none"> • Max. Blower CFM: 400 • 3-speed slide controls • Aluminum mesh filters | <ul style="list-style-type: none"> • 6" round vertical & horizontal ducting • Insert height 11 1/4" • Stainless steel liner option | <ul style="list-style-type: none"> • 6W LumiLight LED lights • Dual-level lighting |

Accessories

| | |
|----------|---|
| ZRC-0080 | Recirculating Kit (w/ charcoal filters) |
| ZOF-C008 | Charcoal Filter Replacement |
| AK0800AS | 17 1/2" - 20 1/2" Depth SS Liner (For 30" hood) |
| AK0836AS | 17 1/2" - 20 1/2" Depth SS Liner (For 36" hood) |

CORE COLLECTION



TORNADO I

TORNADO I 600 CFM Insert w/ Hybrid Baffle Filters and LED Lighting

| | | |
|---|---|--|
| AK8100BS | S | 27 9/16" x 11 3/16" |
| AK8134BS | S | 33 9/16" x 11 3/16" |
| <ul style="list-style-type: none"> • Max. Blower CFM: 600 • 3-speed slide controls • Hybrid baffle filters | <ul style="list-style-type: none"> • 6" round vertical & horizontal ducting • Insert height 11-1/4" • Stainless steel liner option | <ul style="list-style-type: none"> • 6W LumiLight LED lights • Dual-level lighting |

Accessories

| | |
|-----------|---|
| ZRC-0080 | Recirculating Kit (w/ charcoal filters) |
| ZOF-C008 | Charcoal Filter Replacement |
| AK0800AS* | 17 1/2" - 20 1/2" Depth SS Liner (For 30" hood) |
| AK0836AS | 17 1/2" - 20 1/2" Depth SS Liner (For 36" hood) |
| MUA006A | Make-Up Air Kit |

*For AK8100BS model only.

DID YOU KNOW Tornado and Twister liners are adjustable and can accommodate multiple cabinet depths.

Finish: (S)-Stainless Steel

Warranty: 3 years non-consumable parts, 1 year labor (AK84); 10 years non-consumable parts, 1 year labor (AK80, AK80-ES, AK81)

INSERT

CORE COLLECTION



TORNADO GLO
ACT™

MODEL FINISH SIZE W x D

TORNADO GLO 600 CFM Insert w/ Glo LED PAS Panel and ACT™

AK8500AS S 27 3/16" x 11 3/16"

- Max. Blower CFM: 600
- ACT Max. Blower CFM: 390, 290
- Insert height 11 3/16"
- Stainless steel liner option
- 6" vertical & horizontal ducting
- 6-speed electronic controls
- Aluminum mesh filter
- 7W Glo LED PAS Panel
- Dual-level lighting
- Perimeter aspiration system

Accessories

- ZRC-0085 Recirculating Kit (w/ charcoal filters)
- ZOF-C085 Charcoal Filter Replacement
- 14000005 RF Wireless Remote Control
- AK0800AS 17 1/2" - 20 1/2" Depth SS Liner (For 30" hood)
- AK0836AS 17 1/2" - 20 1/2" Depth SS Liner (For 36" hood)
- MUA006A Make-Up Air Kit

PRO COLLECTION



TORNADO II

TORNADO II 1,000 CFM Insert w/ Wireless Remote Control and LED Lighting

AK8200BS S 29 13/16" x 15 13/16"

- Max. Blower CFM: 1,000
- 3-speed electronic touch controls
- CleanAir function
- Auto delay-off
- 10" round vertical ducting
- Insert height 11 1/2"*
- Wireless remote control
- 6W LumiLight LED lights
- Tri-level lighting
- Pro baffle filters

*Height dimension does not include 5" tall, 8" round duct adapter.

Accessories

- AK0806BS 17 5/8" - 20 1/8" Depth SS Liner (For 36" hood)
- AK0806AS 20 1/2" - 23 1/2" Depth SS Liner (For 36" hood)
- AK0842AS 20 1/2" - 23 1/2" Depth SS Liner (For 42" hood)
- MUA008A Make-Up Air Kit

PRO COLLECTION



TORNADO III

TORNADO III Insert w/ Wireless Remote Control, LED Lighting and Multiple Blowers - BODY ONLY*

AK8300BSX S 38 7/16" x 15 13/16"

- Max. Blower CFM: 290-1,100 (not included)
- 3-speed electronic touch controls
- CleanAir function
- Auto delay-off
- 6" or 10" round vertical ducting
- Insert height 11 1/2"***
- Wireless remote control
- 6W LumiLight LED lights
- Tri-level lighting
- Pro baffle filters

*Requires purchase of Zephyr blower, sold separately.

**Height dimension does not include 5" tall, 8" round duct adapter used with blowers 1,000 CFM or greater.

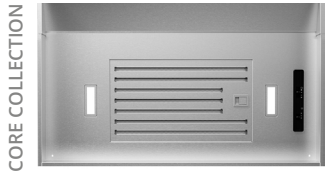
Accessories and Blowers

- AK0848BS 17 5/8" - 20 1/8" Depth SS Liner (For 48" hood)
- AK0848AS 20 1/2" - 23 1/2" Depth SS Liner (For 48" hood)
- AK0854AS 20 1/2" - 23 1/2" Depth SS Liner (For 54" hood)
- AK0860AS 20 1/2" - 23 1/2" Depth SS Liner (For 60" hood)
- CBI-290C 290 CFM Internal Blower (6" round duct)
- CBI-390A 390 CFM Internal Blower (6" round duct)
- CBI-600A 600 CFM Internal Blower (6" round duct)
- PBI-1100B 1,100 CFM Internal Blower (10" round duct)
- PBN-1000A 1,000 CFM In-Line Blower (10" round duct)
- CBE-1000 1,000 CFM External Blower (10" round duct)
- MUA006A Make-Up Air Kit (600 CFM)
- MUA008A Make-Up Air Kit (1,000 CFM)

Finish: (S)-Stainless Steel

Warranty: 3 years non-consumable parts, 1 year labor (AK85); 10 years non-consumable parts, 1 year labor (AK82, AK83)

INSERT



CORE COLLECTION

VORTEX

MODEL FINISH SIZE W x D

VORTEX 390 CFM Insert w/ Recirculating Option, Adjustable Depth and LED Lighting

| | | |
|----------|---|------------------------------|
| AK9028BS | S | 28 3/8" x 17 1/2" to 20 1/2" |
| AK9034BS | S | 34 3/8" x 17 1/2" to 20 1/2" |

- Max. Blower CFM: 390
- 3-speed slide controls
- Hybrid baffle filter
- 6" round vertical & horizontal ducting
- Insert height 12 5/8"
- 6W LumiLight LED lights
- Dual-level lighting

Accessories

| | |
|----------|---|
| ZRC-9000 | Recirculating Kit (w/ charcoal filters) |
| ZOF-C090 | Charcoal Filter Replacement |



CORE COLLECTION

MONSOON MINI

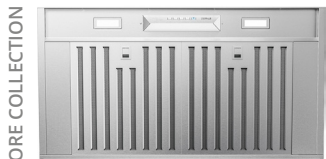
MONSOON MINI 300 CFM Insert w/ Hybrid Baffle Filters and LED Lighting

| | | |
|----------|---|--------------------|
| AK9128BS | S | 28 3/8" x 18 1/16" |
| AK9134BS | S | 34 3/8" x 18 1/16" |

- Max. Blower CFM: 300
- Insert height 6 1/8"
- 3-speed slide controls
- 7" or 3 1/4"x10" vertical ducting
- 3 1/4"x10" horizontal ducting
- Hybrid baffle filters
- 6W LumiLight LED lights
- Dual-level lighting

Accessories

| | |
|-----------|---|
| ZRC-9100A | Recirculating Kit (w/ charcoal filters) |
| ZOF-C091 | Charcoal Filter Replacement |



CORE COLLECTION

MONSOON MINI II

ACT™

MONSOON MINI II 600 CFM Insert w/ Hybrid Baffle Filters, LED Lighting and ACT™

| | | |
|----------|---|-------------------|
| AK9528AS | S | 28 3/8" x 17 7/8" |
| AK9534AS | S | 34 3/8" x 17 7/8" |
| AK9540AS | S | 40 3/8" x 17 7/8" |
| AK9546AS | S | 46 3/8" x 17 7/8" |

- Max. Blower CFM: 600
- ACT Max. Blower CFM: 390, 290
- Insert height 6 1/8"
- Auto delay-off
- 7" or 3 1/4"x10" vertical ducting
- 3 1/4"x10" horizontal ducting
- Hybrid baffle filters
- 6W LumiLight LED lights
- Dual-level lighting
- 3-speed electronic controls

Accessories

| | |
|-----------|---|
| ZRC-9100A | Recirculating Kit (w/ charcoal filters) |
| ZOF-C091 | Charcoal Filter Replacement |
| MUA006A | Make-Up Air Kit |

Finish: (S)-Stainless Steel
Warranty: 3 years non-consumable parts, 1 year labor

INSERT



CORE COLLECTION

MONSOON I
ACT™

MODEL FINISH SIZE W x D

MONSOON I 600 CFM Insert w/ LED Lighting and ACT™

| | | |
|----------|---|-------------------|
| AK9228BS | S | 28 3/8" x 19 1/4" |
| AK9234BS | S | 34 3/8" x 19 1/4" |

- Max. Blower CFM: 600
- ACT Max. Blower CFM: 390, 290
- Insert height 12"
- Pro baffle filters
- 8" round vertical ducting
- 8" round horizontal ducting
- Wireless remote control
- CleanAir function
- 6W LumiLight LED lights
- Dual-level lighting
- 6-speed electronic controls
- Auto delay-off

MONSOON I 1,200 CFM Insert w/ LED Lighting and ACT™

| | | |
|----------|---|-------------------|
| AK9240BS | S | 40 3/8" x 19 1/4" |
| AK9246BS | S | 46 3/8" x 19 1/4" |

- Max. Blower CFM: 1,200
- ACT Max. Blower CFM: 590, 390
- Pro baffle filters
- CleanAir function
- 10" round vertical ducting
- Insert height 12"*
- Wireless remote control
- Auto delay-off
- 6W LumiLight LED lights
- Dual-level lighting
- 6-speed electronic controls

Accessories

| | |
|---------|-----------------------------|
| MUA006A | Make-Up Air Kit (600 CFM) |
| MUA010A | Make-Up Air Kit (1,200 CFM) |

* Height dimension does not include 5" tall, 10" round duct adapter.



PRO COLLECTION

MONSOON II
ACT™

MONSOON II 1,200 CFM Insert w/ LED lighting and ACT™

| | | |
|----------|---|---------------------|
| AK9334BS | S | 34 3/8" x 22 1/2" |
| AK9340BS | S | 40 3/8" x 22 1/2" |
| AK9346BS | S | 46 3/8" x 22 1/2" |
| AK9352BS | S | 52 3/8" x 22 1/2" |
| AK9358BS | S | 58 15/16" x 22 1/2" |

- Max. Blower CFM: 1,200
- ACT Max. Blower CFM: 590, 390
- Pro baffle filters
- CleanAir function
- 10" round vertical ducting
- Insert height 12"*
- Wireless remote control
- Auto delay-off
- 6W LumiLight LED lights
- Dual-level lighting
- 6-speed electronic controls

Accessories

| | |
|---------|-----------------|
| MUA010A | Make-Up Air Kit |
|---------|-----------------|

* Height dimension does not include 5" tall, 10" round duct adapter.



CORE COLLECTION

MONSOON CONNECT
ACT™

MONSOON CONNECT 700 CFM Insert w/ Zephyr Connect & PowerWave™ Blower

| | | |
|----------|---|-------------------|
| AK9428BS | S | 28 3/8" x 19 3/8" |
| AK9434BS | S | 34 3/8" x 19 3/8" |
| AK9440BS | S | 40 3/8" x 19 3/8" |
| AK9446BS | S | 46 3/8" x 19 3/8" |

- Max. Blower CFM: 700 (included)
- Max. Blower CFM: 1,300 (optional)
- ACT Max. Blower CFM: 590, 390, 290
- 6-speed proximity controls
- Zephyr Connect app compatible
- 8" or 10" round vertical ducting
- 8" horizontal ducting
- Insert height 12"
- Pro baffle filters
- Auto delay-off
- 6W LumiLight LED lights
- Tri-level lighting
- Wireless remote control
- CleanAir function

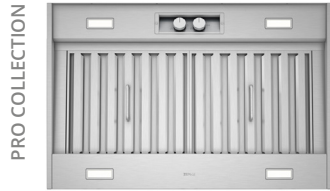
Accessories

| | |
|------------|--|
| PBD-1300B* | 1,300 CFM Internal Blower Kit (10" round duct) |
| 14000005 | RF Wireless Remote Control |
| MUA008A | Make-Up Air Kit |
| MUA010A | Make-Up Air Kit |

*PBD-1300B is a dual internal blower kit with a single blower and two blower openings. To complete the kit you must remove the blower from the hood and install it into the PBD-1300B kit. NOTE: PBD-1300B blower is only compatible with the AK9434BS, AK9440BS, and AK9446BS models.

Finish: (S)-Stainless Steel
Warranty: 3 years non-consumable parts, 1 year labor

OUTDOOR
INSERT / WALL



SPRUCE OUTDOOR



CYPRESS OUTDOOR

Picture above - shown with ZIC-0178 optional duct cover extension.

MODEL FINISH SIZE W x D

SPRUCE 1,200 CFM Outdoor Insert for Wall or Island Installation

| | | |
|----------|---|-------------------|
| AK9834BS | S | 34 3/8" x 22 1/2" |
| AK9840BS | S | 40 3/8" x 22 1/2" |
| AK9846BS | S | 46 3/8" x 22 1/2" |
| AK9858BS | S | 58 7/8" x 22 1/2" |

- Max. Blower CFM: 1,200
- 3-speed knob controls
- 304-grade stainless steel
- 10" round vertical ducting
- Pro baffle filters
- Directional lighting
- 6W LumiLight LED lights
- Dual-level lighting

CYPRESS 1,200 CFM Outdoor 18in Tall Pro-Style Hood w/ 32" Depth

| | | |
|----------|---|-----------|
| AK7836CS | S | 36" x 32" |
| AK7842CS | S | 42" x 32" |
| AK7848CS | S | 48" x 32" |
| AK7854CS | S | 54" x 32" |

- Max. Blower CFM: 1,200
- 3-speed knob controls
- 304-grade stainless steel
- 10" round vertical & horizontal ducting
- Pro baffle filters
- 32" depth
- 6W LumiLight LED lights
- Dual-level lighting

Accessories

| | |
|----------|--|
| AK0736BS | 12"H x 36"W 304 SS Duct Cover (For AK7836CS) |
| AK0742BS | 12"H x 42"W 304 SS Duct Cover (For AK7842CS) |
| AK0748BS | 12"H x 48"W 304 SS Duct Cover (For AK7848CS) |
| AK0754BS | 12"H x 54"W 304 SS Duct Cover (For AK7854CS) |
| ZIC-0178 | Duct Cover Extension - 27" width (For a 10'-12' ceiling) |

MICROWAVE
DRAWER



MODEL FINISH SIZE W x D

BUILT-IN MICROWAVE DRAWER

| | | |
|-----------|---|-----------------------------|
| MWD2401AS | S | 23 5/8" x 16 1/8" x 23 7/8" |
| MWD3001AS | S | 29 5/8" x 16 1/8" x 23 7/8" |

- 1.2 cu/ft
- 304-grade stainless steel
- 1000W
- Electronic touch with LCD display
- White interior
- Anti-fingerprint coating
- Built-in clock
- Interior lighting
- ADA Compliant

Control Features

- Touch Open/Close
- Sensor Cook
- Controls Lock
- Defrost
- Mute On/Off
- Sensor Reheat
- Kitchen Timer
- Melt
- 10 Power Levels
- +30 Seconds Button
- Popcorn
- Soften



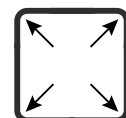
Easy Clean Coating

Equipped with an anti-fingerprint coating on the stainless steel door to eliminate greasy smudges and protects from spills of sticky beverages and foods.



Sensor Cooking

Detects humidity changes during cooking. The oven automatically adjusts the time and power to provide consistent results.



Capacity

Reheat dinner leftovers in the pan you cooked them in. The Zephyr Microwave Drawer can accommodate a 9"x13" baking dish with ease.

Finish: (S)-Stainless Steel

Warranty: (Outdoor hoods) 3 years non-consumable parts, 1 year labor.

(Microwave) 1 year non-consumable parts, 5 years magnetron parts, 1 year labor

BRISAS
RANGE HOODS



ACT™

MODEL FINISH SIZE W x D

TRADITIONAL CHIMNEY WALL RANGE HOOD w/ Airflow Control Technology (ACT™)

| | | |
|-----------|---|---------------|
| BVE-E30CS | S | 30" x 19 3/4" |
| BVE-E36CS | S | 36" x 19 3/4" |

- Max. Blower CFM: 600
- ACT Max. Blower CFM: 390, 290
- Accommodates 9'4" ceiling height
- 3 speed electronic controls
- 6" round vertical ducting
- Aluminum mesh filters
- 6W LumiLight LED lights
- Dual-level lighting

Parts & Accessories

| | |
|----------|--|
| BRC-0108 | Recirculating Kit (w/ charcoal filters) |
| ZOF-C013 | Charcoal Filter Replacement |
| BIC-00VE | Duct Cover Extension Kit (up to 12' ceiling) |



ACT™

CHIMNEY WALL RANGE HOOD W/ CURVED GLASS CANOPY w/ Airflow Control Technology (ACT™)

| | | |
|-----------|------------|---------------|
| BMI-E30DG | S w/ Glass | 30" x 19 3/4" |
| BMI-E36DG | S w/ Glass | 36" x 19 3/4" |

- Max. Blower CFM: 600
- ACT Max. Blower CFM: 390, 290
- Accommodates 8'11.5" ceiling height
- 3 speed electronic controls
- 6" round vertical ducting
- Aluminum mesh filters
- 6W LumiLight LED lights
- Dual-level lighting

Parts & Accessories

| | |
|----------|--|
| BRC-0106 | Recirculating Kit (w/ charcoal filters) |
| ZOF-C012 | Charcoal Filter Replacement |
| BIC-00MI | Duct Cover Extension Kit (up to 12' ceiling) |



ACT™

CHIMNEY ISLAND RANGE HOOD W/ CURVED GLASS CANOPY w/ Airflow Control Technology (ACT™)

| | | |
|-----------|------------|----------------|
| BML-E30CG | S w/ Glass | 30" x 25 5/16" |
| BML-E36CG | S w/ Glass | 36" x 25 5/16" |

- Max. Blower CFM: 600
- ACT Max. Blower CFM: 390, 290
- Accommodates 8'11" ceiling height
- 3 speed electronic controls
- 6" round vertical ducting
- Aluminum mesh filters
- 6W LumiLight LED lights
- Dual-level lighting

Parts & Accessories

| | |
|----------|--|
| BRC-0107 | Recirculating Kit (w/ charcoal filters) |
| ZOF-C091 | Charcoal Filter Replacement |
| BIC-00ML | Duct Cover Extension Kit (up to 12' ceiling) |

Finish: (S)-Stainless Steel

Warranty: 1 year non-consumable parts, 1 year labor within service area

BRISAS WINE & BEVERAGE COOLERS



MODEL FINISH SIZE W x D x H

SINGLE ZONE BEVERAGE COOLER

BBV15C01AG SS + Glass 15" x 33 7/8" x 23 3/8"*

- 38° - 65° F
- 39 dBA
- Capacitive touch controls
- Vibration dampening system
- Dual-pane glass
- Sabbath mode
- 4 bottle/64 12oz can capacity
- 1 black wire rack
- 2 transparent gray glass shelves
- Field-reversible door
- 304-grade stainless steel
- Zero-clearance door hinge
- PreciseTemp™
- Active cooling technology
- Built-in or freestanding
- Blue LED lighting
- Door open alarm

Parts & Accessories

ZOF-C004 Replacement Carbon Filter
PRDC-C03 Adjustable Drink Caddy, 3 Rows

*Depth of cabinet with door, not including handle.



SINGLE ZONE BEVERAGE COOLER

BBV24C01AG SS + Glass 23 7/8" x 33 7/8" x 23 1/2"*

- 38° - 65° F
- 40 dBA
- Capacitive touch controls
- Vibration dampening system
- Dual-pane glass
- Sabbath mode
- 8 bottle/112 12oz can capacity
- 1 black wire rack
- 2 transparent gray glass shelves
- Field-reversible door
- 304-grade stainless steel
- Zero-clearance door hinge
- PreciseTemp™
- Active cooling technology
- Built-in or freestanding
- Blue LED lighting
- Door open alarm

Parts & Accessories

ZOF-C004 Replacement Carbon Filter
PRDC-C03 Adjustable Drink Caddy, 3 Rows

*Depth of cabinet with door, not including handle.



FRENCH DOOR DUAL ZONE WINE & BEVERAGE COOLER

BWB24C32AG SS + Glass 23 7/8" x 33 7/8" x 23 1/2"*

- 38° - 65° F (each zone)
- 40 dBA
- Capacitive touch controls
- Vibration dampening system
- Dual-pane glass
- Zero-clearance door hinge
- 21 bottle/64 12oz can capacity
- 6 black wire racks
- 3 transparent gray glass shelves
- Door open alarm
- 304-grade stainless steel
- PreciseTemp™
- Active cooling technology
- Built-in or freestanding
- Blue LED lighting
- Sabbath mode

Parts & Accessories

ZOF-C004 Replacement Carbon Filter

*Depth of cabinet with door, not including handle.

Door Finish: 304-grade Stainless Steel+Glass. Cabinet Finish: Black. Interior Finish: Black.
Warranty: 2 years non-consumable parts, 5 years compressor, 1 year labor

BRISAS WINE & BEVERAGE COOLERS



MODEL FINISH SIZE W x D

DUAL ZONE WINE COOLER

BWN15C01AG SS + Glass 15" x 33 7/8" x 23 3/8"*

- | | | |
|--|---|--|
| <ul style="list-style-type: none"> • 40° - 65° F • 39 dBA • Capacitive touch controls • Vibration dampening system • Dual-pane glass • Zero-clearance door hinge | <ul style="list-style-type: none"> • 28 bottle capacity • 6 black wire racks • Door open alarm • Field-reversible door • 304-grade stainless steel | <ul style="list-style-type: none"> • PreciseTemp™ • Active cooling technology • Built-in or freestanding • Blue LED lighting • Sabbath mode |
|--|---|--|

Parts & Accessories

ZOF-C004 Replacement Carbon Filter

*Depth of cabinet with door, not including handle.

DUAL ZONE WINE COOLER

BWN24C02AG SS + Glass 23 7/8" x 33 7/8" x 23 1/2"*

- | | | |
|--|---|--|
| <ul style="list-style-type: none"> • 40° - 65° F (each zone) • 40 dBA • Capacitive touch controls • Vibration dampening system • Dual-pane glass • Zero-clearance door hinge | <ul style="list-style-type: none"> • 46 bottle capacity • 5 black wire racks • Door open alarm • Field-reversible door • 304-grade stainless steel | <ul style="list-style-type: none"> • PreciseTemp™ • Active cooling technology • Built-in or freestanding • Blue LED lighting • Sabbath mode |
|--|---|--|

Parts & Accessories

ZOF-C004 Replacement Carbon Filter

*Depth of cabinet with door, not including handle.

Door Finish: 304-grade Stainless Steel+Glass. Cabinet Finish: Black. Interior Finish: Black.
Warranty: 2 years non-consumable parts, 5 years compressor, 1 year labor

ACCESSORIES

MODEL DESCRIPTION

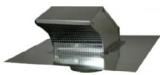
HVAC Accessories



| | |
|---------|--------------------------|
| AK00029 | 6" round in-line damper |
| AK00049 | 7" round in-line damper |
| AK00069 | 8" round in-line damper |
| AK00079 | 10" round in-line damper |



| | |
|---------|------------------------|
| AK00039 | 7 to 6" round reducer |
| AK00037 | 8 to 6" round reducer |
| AK00035 | 8 to 7" round reducer |
| AK00040 | 10 to 8" round reducer |



| | |
|---------|--|
| AK00146 | 6" round exhaust roof cap w/bird screen |
| AK00147 | 7" round exhaust roof cap w/bird screen |
| AK00148 | 8" round exhaust roof cap w/bird screen |
| AK00150 | 10" round exhaust roof cap w/bird screen |



| | |
|---------|---|
| AK00041 | 3 1/4" x 10" rectangular exhaust wall cap w/ damper & bird screen |
|---------|---|



| | |
|---------|---|
| AK00042 | 6" round exhaust wall cap w/damper & bird screen |
| AK00043 | 7" round exhaust wall cap w/damper & bird screen |
| AK00044 | 8" round exhaust wall cap w/damper & bird screen |
| AK00045 | 10" round exhaust wall cap w/damper & bird screen |



| | |
|---------|--|
| AK00030 | 6" round inlet wall cap w/bird screen |
| AK00031 | 7" round inlet wall cap w/bird screen |
| AK00032 | 8" round inlet wall cap w/bird screen |
| AK00052 | 10" round inlet wall cap w/bird screen |



| | |
|---------|-----------------------------|
| AK00066 | 6" round damper with collar |
| AK00067 | 7" round damper with collar |



Universal Make-Up Air Damper Kits

| | |
|---------|--|
| MUA006A | 6" round make-up air damper kit for up to 600 CFM |
| MUA008A | 8" round make-up air damper kit for up to 1,000 CFM |
| MUA010A | 10" round make-up air damper kit for up to 1,200 CFM |

DID YOU KNOW Zephyr's Universal Make-Up Air Dampers can be used with any range hood over 300 CFM, even non-Zephyr branded range hoods.

Universal Telescopic Stainless Steel Backsplash



| | |
|--------|---------------------------------|
| AK1710 | Backsplash, Telescopic, 30", SS |
| AK1716 | Backsplash, Telescopic, 36", SS |
| AK1712 | Backsplash, Telescopic, 42", SS |
| AK1718 | Backsplash, Telescopic, 48", SS |
| AK1714 | Backsplash, Telescopic, 54", SS |

DID YOU KNOW the telescopic stainless steel backsplash can be used with any hood with the same width.

Warm White LED Bulb - Direct Replacement for GU10 Halogen Bulbs



| | |
|---------|-----------------------------|
| ZOB0040 | Bloom™ GU10 LED (6W, 3000K) |
|---------|-----------------------------|

TO OBTAIN SERVICE UNDER WARRANTY OR FOR ANY SERVICE RELATED QUESTIONS

United States Customers please call: 1-888-880-8368 or contact us at: zephyronline.com/contact

Canada Customers please call: 1-800-361-0799 or Email: service@distinctive-online.com

Zephyr Ventilation, LLC (referred to herein as “we” or “us”) warrants to the original consumer purchaser (referred to herein as “you” or “your”) of Zephyr products (the “Products”) that such Products will be free from defects in materials or workmanship as follows:

xx* Year Limited Warranty for Parts:

For xx* years from the date of your original purchase of the Products, we will provide, free of charge, Products or parts (including LED light bulbs, if applicable) to replace those that failed due to manufacturing defects subject to the exclusions and limitations below. We may choose, in our sole discretion, to repair or replace parts before we elect to replace the Products.

One Year Limited Warranty for Labor:

For one year from the date of your original purchase of the Products, we will provide, free of charge, the labor cost associated with repairing the Products or parts to replace those that failed due to manufacturing defects subject to the exclusions and limitations below. After the first year from the date of your original purchase, you are responsible for all labor costs associated with this warranty.

Warranty Exclusions:

This warranty covers only repair or replacement, at our option, of defective Products or parts and does not cover any other costs related to the Products including but not limited to: (a) normal maintenance and service required for the Products and consumable parts such as fluorescent, incandescent or halogen light bulbs, mesh and char- coal filters and fuses; (b) any Products or parts which have been subject to freight damage, misuse, negligence, accident, faulty installation or installation contrary to recommended installation instructions, improper maintenance or repair (other than by us); (c) commercial or government use of the Products or use otherwise inconsistent with its intended purpose; (d) natural wear of the finish of the Products or wear caused by improper maintenance, use of corrosive and abrasive cleaning products, pads, and oven cleaner products; (e) chips, dents or cracks caused by abuse or misuse of the Products; (f) service trips to your home to teach you how to use the Products; (g) damage to the Products caused by accident, fire, floods, acts of God; or (h) Custom installations or alterations that impact serviceability of the Products. If you are outside our service area, additional charges may apply for shipping costs for warranty repair at our designated service locations and for the travel cost to have a service technician come to your home to repair, remove or reinstall the Products. After the first year from the date of your original purchase, you are also responsible for all labor costs associated with this warranty. All Products must be installed by a qualified professional installer to be eligible for warranty repairs or service.

Limitations of Warranty.

OUR OBLIGATION TO REPAIR OR REPLACE, AT OUR OPTION, SHALL BE YOUR SOLE AND EXCLUSIVE REMEDY UNDER THIS WARRANTY. WE SHALL NOT BE LIABLE FOR INCIDENTAL, CONSEQUENTIAL OR SPECIAL DAMAGES ARISING OUT OF OR IN CONNECTION WITH THE USE OR PERFORMANCE OF THE PRODUCTS.

THE EXPRESS WARRANTIES IN THE PRECEDING SECTION ARE EXCLUSIVE AND IN LIEU OF ALL OTHER EXPRESS WARRANTIES. WE HEREBY DISCLAIM AND EXCLUDE ALL OTHER EXPRESS WARRANTIES FOR THE PRODUCTS, AND DISCLAIM AND EXCLUDE ALL WARRANTIES IMPLIED BY LAW, INCLUDING THOSE OF MERCHANTABILITY AND FITNESS FOR A PARTICULAR PURPOSE.

Some states or provinces do not allow limitations on the duration of an implied warranty or the exclusion or limitation of incidental or consequential damages, so the above limitations or exclusions may not apply to you. To the extent that applicable law prohibits the exclusion of implied warranties, the duration of any applicable implied warranty is limited to the same three-year and one-year periods described above if permitted by applicable law. Any oral or written description of the Products is for the sole purpose of identifying the Products and shall not be construed as an express warranty. Prior to using, implementing or permitting use of the Products, you shall determine the suitability of the Products for the intended use, and you shall assume all risk and liability whatsoever in connection with such determination. We reserve the right to use functionally equivalent refurbished or reconditioned parts or Products as warranty replacements or as part of warranty service. This warranty is not transferable from the original purchaser and only applies to the consumer residence where the Product was originally installed located in the United States and Canada. This warranty is not extended to resellers.

To Obtain Service Under Limited Warranty:

To qualify for warranty service, you must: (a) notify us at the address or telephone number stated below within 60 days of the discovery of the defect; (b) give the model number and serial number; and (c) describe the nature of any defect in the Product or part. At the time of the request for warranty service, you must present evidence of your proof of purchase and proof of the original purchase date. If we determine that the warranty exclusions listed above apply or if you fail to provide the necessary documentation to obtain service, you will be responsible for all shipping, travel, labor and other costs related to the services. This warranty is not extended or restarted upon warranty repair or replacements.

Please check our website for any additional Product information, www.zephyronline.com
Zephyr, 2277 Harbor Bay Parkway, Alameda, CA 94502

Zephyr Ventilation, LLC (referred to herein as “we” or “us”) warrants to the original consumer purchaser (referred to herein as “you” or “your”) of Zephyr products (the “Products”) that such Products will be free from defects in materials or workmanship as follows:

Five Year Limited Warranty for Compressor:

For five years from the date of your original purchase of the Products, we will provide, free of charge, compressor parts to replace those that failed due to manufacturing defects subject to the exclusions and limitations below. We may choose, in our sole discretion, to repair or replace parts before we elect to replace the Products.

Two Year Limited Warranty for Parts:

For two years from the date of your original purchase of the Products, we will provide, free of charge, Products or parts (including LED light bulbs, if applicable) to replace those that failed due to manufacturing defects subject to the exclusions and limitations below. We may choose, in our sole discretion, to repair or replace parts before we elect to replace the Products.

One Year Limited Warranty for Labor:

For one year from the date of your original purchase of the Products, we will provide, free of charge, the labor cost associated with repairing the Products or parts to replace those that failed due to manufacturing defects subject to the exclusions and limitations below. After the first year from the date of your original purchase, you are responsible for all labor costs associated with this warranty.

To Obtain Service Under Limited Warranty:

To qualify for warranty service, you must: (a) notify us at the address or telephone number stated below within 60 days of the discovery of the defect; (b) give the model number and serial number; and (c) describe the nature of any defect in the Product or part. At the time of the request for warranty service, you must present evidence of your proof of purchase and proof of the original purchase date. If we determine that the warranty exclusions listed above apply or if you fail to provide the necessary documentation to obtain service, you will be responsible for all shipping, travel, labor and other costs related to the services. This warranty is not extended or restarted upon warranty repair or replacements.

Warranty Exclusions:

This warranty covers only repair or replacement, at our option, of defective Products or parts and does not cover any other costs related to the Products including but not limited to: (a) normal maintenance and service required for the Products and consumable parts such as filters, light bulbs, fuses; (b) any Products or parts which have been subject to freight damage, misuse, negligence, accident, faulty installation or installation contrary to recommended installation instructions, improper maintenance or repair (other than by us); (c) commercial or government use of the Products or use otherwise inconsistent with its intended purpose; (d) natural wear of the finish of the Products or wear caused by improper maintenance, use of corrosive and abrasive cleaning products, pads, and oven cleaner products; (e) chips, dents or cracks caused by abuse or misuse of the Products; (f) service trips to your home to teach you how to use the Products; (g) damage to the Products caused by accident, fire, floods, acts of God; or (h) Custom installations or alterations that impact serviceability of the Products. (I) Damage to personal property or food spoilage from use of this product. If you are outside our service area, additional charges may apply for shipping costs for warranty repair at our designated service locations and for the travel cost to have a service technician come to your home to repair, remove or reinstall the Products. After the first year from the date of your original purchase, you are also responsible for all labor costs associated with this warranty. All Products must be installed by a qualified professional installer to be eligible for warranty repairs or service.

Limitations of Warranty:

OUR OBLIGATION TO REPAIR OR REPLACE, AT OUR OPTION, SHALL BE YOUR SOLE AND EXCLUSIVE REMEDY UNDER THIS WARRANTY. WE SHALL NOT BE LIABLE FOR INCIDENTAL, CONSEQUENTIAL OR SPECIAL DAMAGES ARISING OUT OF OR IN CONNECTION WITH THE USE OR PERFORMANCE OF THE PRODUCTS. THE EXPRESS WARRANTIES IN THE PRECEDING SECTION ARE EXCLUSIVE AND IN LIEU OF ALL OTHER EXPRESS WARRANTIES. WE HEREBY DISCLAIM AND EXCLUDE ALL OTHER EXPRESS WARRANTIES FOR THE PRODUCTS, AND DISCLAIM AND EXCLUDE ALL WARRANTIES IMPLIED BY LAW, INCLUDING THOSE OF MERCHANTABILITY AND FITNESS FOR A PARTICULAR PURPOSE.

Some states or provinces do not allow limitations on the duration of an implied warranty or the exclusion or limitation of incidental or consequential damages, so the above limitations or exclusions may not apply to you. To the extent that applicable law prohibits the exclusion of implied warranties, the duration of any applicable implied warranty is limited to the same two-year and one-year periods described above if permitted by applicable law. Any oral or written description of the Products is for the sole purpose of identifying the Products and shall not be construed as an express warranty. Prior to using, implementing or permitting use of the Products, you shall determine the suitability of the Products for the intended use, and you shall assume all risk and liability whatsoever in connection with such determination. We reserve the right to use functionally equivalent refurbished or reconditioned parts or Products as warranty replacements or as part of warranty service. This warranty is not transferable from the original purchaser and only applies to the consumer residence where the Product was originally installed located in the United States and Canada. This warranty is not extended to resellers.

PRODUCT GUIDE 2025

ZEPHYR

T 800 361 0799 F 450 682 7943

www.distinctive-online.com info@distinctive-online.com

EASTERN CANADA

Head Office & Warehouse
2025 Cunard Street
Laval, QC H7S 2N1

WESTERN CANADA

Warehouse
NFI 1020 Derwent Way
Delta, BC V3M 5R1

SERVICE DEPARTMENT

service@distinctive-online.com
1-800-561-7265

ORDER DESK

orderdesk@distinctive-online.com